

BRIX COMPONENTS & ACCESSORIES

BASE COMPLETE
WITH 4 RUBBER WHEELS
(NYLON FORK) Ø 125 MM
WITH 2 BRAKES AND 4 BUMPERS

CODE
PMVR95671 - 0008



BASE COMPLETE
WITH 4 RUBBER WHEELS
(NYLON FORK) Ø 125 MM
AND 4 BUMPERS

CODE
PMVR95674 - 0008



BASE COMPLETE
WITH 4 RUBBER WHEELS
(METAL FORK) Ø 100 MM

CODE
PMVR95672 - 0008



BASE COMPLETE
WITH 4 RUBBER WHEELS
(METAL FORK) Ø 100 MM
WITH 2 BRAKES

CODE
PMVR95675 - 0008



BASE COMPLETE
WITH 4 RUBBER WHEELS
(NYLON FORK) Ø 150 MM
AND 4 BUMPERS

CODE
PMVR95676 - 0008



SMALL COUNTERTOP

CODE
PMVR94850 - 0008



LARGE COUNTERTOP

CODE
MPVR94849 - 0008



BOTTOM INSERT FOR COUNTERTOP

CODE
MPVR94839 - 0008



FLAT INSERT FOR COUNTERTOP

CODE
MPVR94851 - 0008



GREY LID FOR COUNTERTOP COMPLETE WITH KEY

CODE with key
MPVR04794 - 0008

CODE without key
MPVR94838 - 0608



GREY LID FOR COUNTERTOP COMPLETE WITH LOCK

CODE
MPVR94841 - 0608



TRANSPARENT LID FOR COUNTERTOP COMPLETE WITH KEY

CODE with key
MPVR04714 - 0070

CODE without key
MPVR94838 - 0670



TRANSPARENT LID FOR COUNTERTOP COMPLETE WITH LOCK

CODE
MPVR94841 - 0670



COVER HANDLE

CODE
MPVR94891

● 0005 ● 0002 ● 0004 ● 0009



ALUMINUM CYLINDRICAL

SUPPORT 803 MM

TYPE 1

CODE
PRAL00081 - 0008



ALUMINUM CYLINDRICAL

SUPPORT 1190 MM

TYPE 2

CODE
PRAL00082 - 0008



ALUMINUM CYLINDRICAL

SUPPORT 400 MM

TYPE 3

CODE
PRAL00083 - 0008



CENTRAL COVER

FOR ALUMINUM CYLINDRICAL
SUPPORT LIGHT GREY

CODE
MPVR94859 - 0006



CENTRAL COVER

FOR ALUMINUM CYLINDRICAL
SUPPORT DARK GREY

CODE
MPVR94859 - 0008



DOOR COMPLETE

WITH LOCK AND GREEN HANDLE

CODE
MPVR94847

● 0506 ● 0206
● 0406 ● 0960



LATERAL COVER

FOR ALUMINUM CYLINDRICAL
SUPPORT LIGHT GREY

CODE
MPVR94860 - 0006



LATERAL COVER

FOR ALUMINUM CYLINDRICAL
SUPPORT DARK GREY

CODE
MPVR94860 - 0008



DOOR COMPLETE

WITH KEY AND GREEN HANDLE

CODE with key
MPVR04779

CODE without key
MPVR94848

● 0506 ● 0206
● 0406 ● 0960



LATERAL NEUTRAL PANEL

CODE
MPVR94843 - 0008



LATERAL PANEL

WITH BRIX LOGO

CODE
MPVR94842 - 0008



MIDDLE PANEL

CODE
MPVR94844 - 0008



DRAWER COMPLETE

WITH FRONTAL PANEL

CODE with key
PMVR01547

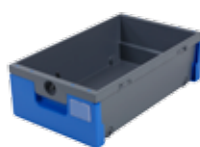
CODE with lock
PMVR06324

CODE with closure
PMVR95685

DIGIT



● 0608



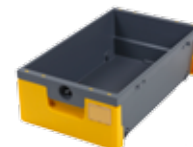
● 0508



● 0208



● 0908



● 0408

**TRAY FOR MOPS/TOOLS
9 LT.**

(FITS THE PUSHING HANDLE)

CODE
MPVR94836 - 0008



**LID FOR 9 LT. TRAY
WITH HINGES**

CODE
MPVR94840 - 0008



**SUPPORT BAG 120 LT.
WITH BUMPERS**

CODE
MPVR94816 - 0008



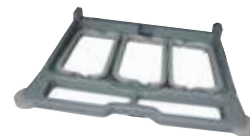
**SUPPORT BAG 2X70 LT.
WITH BUMPERS**

CODE
PMVR95684 - 0008



**SUPPORT BAG 3X40 LT.
WITH BUMPERS**

CODE
PMVR06290 - 0008



**PUSHING HANDLE
COMPLETE
WITH BUMPERS**

CODE
MPVR94854 - 0008



BASE FOR BAG

CODE
PMVR95682 - 0008



**BASE FOR BAG
WITH PEDAL SUPPORT**

CODE
PMVR95683 - 0008



**BASE FOR BAG
WITH 1 WHEEL SUPPORT AND 1 WHEEL Ø 80 MM**

CODE
MPVR95680 - 0008



**BASE FOR BAG
WITH 2 WHEEL SUPPORTS AND 2 WHEELS Ø 80 MM**

CODE
PMVR01539 - 0008



**BASE FOR BAG
WITH 2 WHEEL SUPPORTS, 2 WHEELS Ø 80 MM
AND PEDAL SUPPORT**

CODE
PMVR95681 - 0008



MOP SUPPORT

CODE
MPVR94835 - 0008



**WHEEL SUPPORT COMPLETE
WITH WHEEL Ø 80 MM**

CODE
PMVR95687 - 0008



BUMPER FOR WHEEL

CODE
MPVR94855 - 0006



PEDAL SUPPORT

CODE
MPVR94879 - 0008



ROUND COVER

(FOR BASE FOR BAG)

CODE
MPVR94870 - 0008



BAR FOR PEDAL

CODE
MPVR94677 - 0008



PEDAL

CODE
MPVR94676 - 0008



DIVIDER FOR BAG SUPPORT

(HOLDING 2X70 LT. BAGS)

CODE
MPVR94866 - 0008



LEVER HOLDING BAG

CODE
MPVR94633 - 0008



LEVER HOLDING BAG

COUPLE

(40 LT.)

CODE
MPVR10649 - 0006



LID FOR SUPPORT BAG

CODE
MPVR94837 - 0008



FRAMEWORK FOR BAG

HOLDER LATERAL

REINFORCING SUPPORT COMPLETE

WITH LOCKING LEVER

CODE
PMVR94880 - 0008



BAG HOLDER LATERAL

REINFORCING SUPPORT

CODE
MPVR94630 - 0008



DOCUMENT HOLDER

CODE
MPVR10647



RUBBER WHEEL

(NYLON FORK)

Ø 125 MM

CODE
RTRT00574 - 0608



RUBBER WHEEL

(NYLON FORK)

Ø 125 MM WITH BRAKE

CODE
RTRT99673 - 0608



RUBBER WHEEL

(METAL FORK)

Ø 100 MM

CODE
RTRT00557



RUBBER WHEEL

(METAL FORK)

Ø 100 MM WITH BRAKE

CODE
RTRT99629



RUBBER WHEEL

(NYLON FORK)

Ø 150 MM

CODE
RTRT00561



**3 HINGES
(DOUBLE VERSION)**

CODE
MPVR94821 - 0008



**3 HINGES
(SINGLE VERSION)**

CODE
MPVR94822 - 0008



**SET OF HANDLE, TOOLS
AND SAFETY SIGN HOLDERS**

CODE
MPVR94819 - 0008



**SET OF 6 COVERS
FOR ALUMINUM SUPPORT AND WRENCH**

CODE
MPVR94818 - 0006



**SET OF NEUTRAL UPPER
PLATE WITH BRIX LOGO,
3 NEUTRAL SLOT COVERING CAPS AND
1 SLOT COVERING CAP "MADE IN ITALY"**

CODE
MPVR94828 - 0008



**SET OF NEUTRAL UPPER
PLATE WITH BRIX LOGO,
1 NEUTRAL SLOT COVERING CAPS AND
1 SLOT COVERING CAP "MADE IN ITALY"**

CODE
MPVR94823 - 0008



**4 COVERS
FOR LATERAL PANEL**

CODE
MPVR94820 - 0008



**REAR PANEL
FOR BRIX HOTEL MAXI**

CODE
MPVR94845



**REINFORCING SUPPORT
FOR BRIX HOTEL MAXI PANELS**

CODE
PRAL00084



**UPPER PLATE
WITH BRIX LOGO**

CODE
MPVR94873 - 0008



**SLOT COVERING CAP
WITH "MADE IN ITALY"**

CODE
MPVR94856 - 0008



SLOT COVERING CAP

CODE
MPVR94857 - 0099



COVER FOR LATERAL PANEL

CODE
MPVR94861 - 0008



**DOVETAIL INSERT
WITH SLOT**

CODE
MPVR94858 - 0008



**DOVETAIL INSERT
WITH SLOT**

CODE
MPVR04771



HANDLE HOLDER COMPLETE

CODE
PMVR95637 - 0008



HOLDER FOR TOOLS COMPLETE

CODE
PMVR95638 - 0008



SAFETY SIGN HOLDER COMPLETE

CODE
PMVR95639 - 0008



RUBBER HANDLE HOLDER COMPLETE

CODE standard
PMVR01545 - 0008

CODE for BRIX PT
MPVR94817 - 0013



ROUND COVER FOR BASE

CODE
MPVR94871 - 0008



ROUND COVER FOR BASE Ø 30 MM

CODE
MPVR94704 - 0006



22 LT. POLYPROPYLENE BUCKET RED | BLUE

CODE
SECC70015

- NNR6 30ST
- NNB6 30ST



LID FOR 22 LT. BUCKET RED | BLUE

CODE
SECC70019

- NNR 21ST
- NNB 21ST



METAL WRINGER SUPPORT COMPLETE WITH PLASTIC INSERTS FOR BASE

CODE standard
PMLA96093 - 0008

CODE for base for bag
COME00310 - 0008



UPPER SUPPORT FOR 22 LT. BUCKET

CODE
COME00267 - 0008



LOWER SUPPORT FOR 22 LT. BUCKET

CODE
COME00268 - 0008



HANGING HOOK FOR 22 LT. BUCKET

CODE
PMLA96095 - 0008



NEW LINE / STRONG WRINGER

CODE
STRI00005 - 0009



SPEED / BOOK WRINGER

CODE
STRI00003 - 0009



ROLLER / RULLY WRINGER

CODE
STRI00007 - 0009



6 LT. BUCKET GREY
WITH COLORED HANDLE

CODE
SECC00056

- 0508 ● 0208
- 0908 ● 0408



LID FOR 6 LT. BUCKET

CODE
MPVR94553 - 0006



HOLDER FOR 6 LT. BUCKET
OR 35 LT. BAG

CODE
PMVR95688 - 0008



15 LT. BUCKET

CODE
SECC00055

- 0605 ● 0602
- 0609 ● 0620



120 LT. GREY BAG
WITH FRONTAL ZIPPER

CODE
SACC00024 - 0006



120 LT. GREY BAG
WITH FRONTAL ZIPPER AND BRIX LOGO

CODE
SACC00023 - 0006



70 LT. BAG

CODE
SACC00036

- 0005 ● 0002



40 LT. RED BAG

CODE
SACC00061

- 0005 ● 0002
- 0003 ● 0004



35 LT. BAG

CODE
SACC00038

- 0005 ● 0002



35 LT. NET
FOR MOP WASHING

CODE
SACC00017 - 0201



90 LT. NET
FOR MOP WASHING

CODE
SACC00002

- 0501 ● 0201



PRE-IMPREGNATION GRID
FOR BRIX DRAWER

CODE
MPVR94888 - 0070



BRIX BAG COVER

CODE
AAA0000



BRIX ADJUSTABLE HANDLE

CODE long version
AAA0000

CODE short version
AAA0000



RUBBER HANDLE GRIP

CODE
AAA0000

