



BRIX

BLACK IS GREEN™

COMPONENTES & ACCESSORIES

BASE COMPLETE
 WITH 4 RUBBER WHEELS Ø125 MM
 (NYLON FORK) WITH BRAKES AND 4 BUMPERS
 CODE
 PMVR95671 - 0099



BASE COMPLETE
 WITH 4 RUBBER WHEELS Ø 125 MM
 (NYLON FORK) AND 4 BUMPERS
 CODE
 PMVR95674 - 0099



BASE COMPLETE
 WITH 4 RUBBER WHEELS Ø100 MM
 (METAL FORK)
 CODE
 PMVR95672 - 0099



BASE COMPLETE
 WITH 4 RUBBER WHEELS Ø100 MM
 (METAL FORK) AND 2 BRAKES
 CODE
 PMVR95675 - 0099



BASE COMPLETE
 WITH 4 RUBBER WHEELS Ø150 MM
 CODE
 PMVR95676 - 0099



SMALL COUNTERTOP

CODE
 MPVR94850 - 0099



BOTTOM INSERT FOR COUNTERTOP

CODE
 MPVR94839 - 0099



FLAT INSERT FOR COUNTERTOP

CODE
 MPVR94851 - 0099



LARGE COUNTERTOP

CODE
 MPVR94849 - 0099



BLACK LID FOR COUNTERTOP COMPLETE WITH KEY

CODE with key
 MPVR04794 - 0099

CODE without key
 MPVR94838 - 0099



BLACK LID FOR COUNTERTOP COMPLETE WITH LOCK

CODE
 MPVR94841 - 0699



TRANSPARENT LID FOR COUNTERTOP COMPLETE WITH LOCK

CODE
 MPVR94841 - 0670



TRANSPARENT LID FOR COUNTERTOP COMPLETE WITH KEY

CODE with key
 MPVR04714 - 0070

CODE without key
 MPVR94838 - 0670



ALUMINUM CYLINDRICAL SUPPORT 803 MM TYPE 1

CODE
 PRAL00081 - 0008



LATERAL COVER FOR ALUMINUM CYLINDRICAL SUPPORT BLACK

CODE
 MPVR04769 - 0099



COVER HANDLE

CODE
 MPVR94891

0005 0002
 0004 0009



CENTRAL COVER FOR ALUMINUM CYLINDRICAL SUPPORT BLACK

CODE
 MPVR04778 - 0099



DOOR COMPLETE
WITH LOCK AND GREEN HANDLE

CODE
MPVR94847

- 0599 ● 0299
- 0499 ● 0999



DOOR COMPLETE
WITH KEY AND GREEN HANDLE

CODE with key
MPVR04779

CODE without key
MPVR94848

- 0599 ● 0299
- 0499 ● 0999



LATERAL PANEL NEUTRAL

CODE
MPVR94843 - 0099



LATERAL PANEL
WITH BRIX LOGO

CODE
MPVR94842 - 0099



DRAWER COMPLETE
WITH FRONTAL PANEL

CODE with key
PMVR01547

CODE with lock
PMVR06324

CODE with closure
PMVR95685

DIGIT

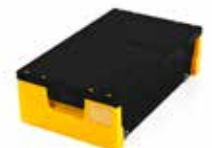
● 0699

● 0599

● 0299

● 0999

● 0499



TRAY FOR MOP/TOOLS
9 LT.
(FITS THE PUSHING HANDLE)

CODE
MPVR94836 - 0099



LID FOR 9 LT. TRAY
WITH HINGES

CODE
MPVR94840 - 0099



PUSHING HANDLE COMPLETE
WITH BUMPERS

CODE
MPVR94854 - 0013



PUSHING HANDLE ANTARES

CODE
MPVR94594 - 0099



SUPPORT BAG 120 LT.
WITH BUMPERS

CODE
MPVR94816 - 0099



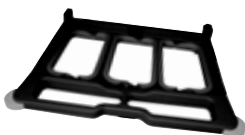
SUPPORT BAG 2x70 LT.
WITH BUMPERS

CODE
PMVR95684 - 0099



SUPPORT BAG 3X40 LT.
WITH BUMPERS

CODE
PMVR06290 - 0099



BASE FOR BAG
WITH 2 WHEEL SUPPORTS, 2 WHEELS Ø 80 MM
AND PEDAL SUPPORT

CODE
PMVR95681 - 0099



BASE FOR BAG
WITH 2 WHEEL SUPPORTS AND 2 WHEELS Ø 80 MM

CODE
PMVR01539 - 0099



BASE FOR BAG

CODE
PMVR95682 - 0099



MOP SUPPORT

CODE
MPVR94835 - 0099



**SUPPORT COMPLETE
WITH WHEEL Ø 80 MM**

CODE
MPVR94872 - 0013



BUMPER FOR WHEEL

CODE
MPVR94855 - 0099



PEDAL SUPPORT

CODE
MPVR94879 - 0099



**ROUND COVER
(FOR BASE FOR BAG)**

CODE
MPVR94870 - 0099



BAR FOR PEDAL

CODE
MPVR94677 - 0006



PEDAL

CODE
MPVR94676 - 0006



**DIVIDER FOR BAG SUPPORT
(HOLDING 2X70 LT. BAG)**

CODE
MPVR94866 - 0099



LEVER HOLDING BAG

CODE
MPVR94633 - 0006



LID FOR SUPPORT BAG

CODE
MPVR94837 - 0099



**FRAMEWORK FOR BAG
HOLDER LATERAL
REINFORCING SUPPORT COMPLETE
WITH LOCKING LEVER**

CODE
MPVR94880 - 0099



**BAG HOLDER LATERAL
REINFORCING SUPPORT**

CODE
MPVR94630 - 0099



DOCUMENT HOLDER

CODE
MPVR10647



**RUBBER WHEEL
(NYLON FORK)
Ø 125 MM**

CODE
RTRT00572 - 0608



**RUBBER WHEEL
(NYLON FORK)
Ø 125 MM WITH BRAKE**

CODE
RTRT00570 - 0608



RUBBER WHEEL
(METAL FORK)
Ø 100 MM

CODE
RTRT00557



RUBBER WHEEL
(METAL FORK)
Ø 100 MM WITH BRAKE

CODE
RTRT99629



RUBBER WHEEL
(NYLON FORK)
Ø 150 MM

CODE
RTRT00561



3 HINGES
(DOUBLE VERSION)

CODE
MPVR94821 - 0008



**SET OF HANDLE, TOOLS
AND SAFETY SIGN HOLDERS**

CODE
MPVR94819 - 0006



**HANDLE HOLDER
COMPLETE**

CODE
PMVR95637 - 0006



3 HINGES
(SINGLE VERSION)

CODE
MPVR94822 - 0008



**HOLDER FOR TOOLS
COMPLETE**

CODE
PMVR95638 - 0006



SLOT COVERING CAP
WITH "MADE IN ITALY"

CODE
MPVR94856 - 0099



SET OF 6 COVERS
FOR ALUMINUM SUPPORTS AND WRENCH

CODE
MPVR94818 - 0006



**SAFETY SIGN HOLDER
COMPLETE**

CODE
PMVR95639 - 0006



SLOT COVERING CAP

CODE
MPVR94857 - 0099



**RUBBER HANDLE HOLDER
COMPLETE**

CODE
PMVR01545 - 0006



SET OF

1 UPPER PLATE WITH BRIX LOGO, 1 SLOT
COVERING CAP AND 1 SLOT COVERING CAP
WITH "MADE IN ITALY"

CODE
MPVR94823 - 0099



SET OF

1 UPPER PLATE BRIX AND IPC LOGO, 1 SLOT
COVERING CAP AND 1 SLOT COVERING CAP
WITH "MADE IN ITALY"

CODE
MPVR94824 - 0099



SET OF

1 UPPER PLATE WITH BRIX LOGO, 3 SLOT
COVERING CAP AND 1 SLOT COVERING CAP
WITH "MADE IN ITALY"

CODE
MPVR94828 - 0099



SET OF 4 COVERS
FOR SIDE PANEL

CODE
MPVR94820 - 0013



COVER FOR LATERAL PANEL

CODE
MPVR94861 - 0013



UPPER PLATE
WITH BRIX AND IPC LOGO

CODE
MPVR04776 - 0099



UPPER PLATE
WITH BRIX LOGO

CODE
MPVR94873 - 0099



DOVETAIL INSERT

CODE
MPVR94858 - 0099



DOVETAIL INSERT WITH SLOT

CODE
MPVR04771 - 0013



DOVETAIL INSERT WITH 4 HOLES

CODE
MPVR04772 - 0013



ROUND COVER FOR BASE Ø 25 MM

CODE
MPVR94871 - 0099



ROUND COVER FOR BASE Ø 30 MM

CODE
MPVR94704 - 0006



METAL WRINGER SUPPORT COMPLETE

CODE standard
PMLA96093 - 0008

CODE for base for bag
COME00310 - 0008



NEW LINE / STRONG WRINGER

CODE
STRI00030 - 0699



15 LT. BUCKET BLACK IS GREEN™

CODE
SECC00055
● 0599 ● 0299



FIXING JUNCTION FOR WHEELS FOR COMPACT TROLLEYS

CODE
MPVR04773 - 0013



HOLDER FOR 6 LT. BUCKET OR 35 LT. BAG

CODE
PMVR95688 - 0008



6 LT. BUCKET BLACK WITH COLORED HANDLE

CODE
SECC00056
● 0599 ● 0299
● 0999 ● 0499



ADAPTATOR ANTIROTATION COMPACT

CODE
MPVR04775 - 0013



120 LT. GREY BAG WITH FRONTAL ZIPPER

CODE
SACC00024 - 0006



120 LT. GREY BAG WITH FRONTAL ZIPPER AND BRIX LOGO

CODE
SACC00023 - 0006



70 LT. BAG

CODE
SACC00036
● 0005 ● 0002



40 LT. RED BAG

CODE
SACC00061
● 0005 ● 0002
● 0003 ● 0004



35 LT. BAG

CODE
SACC00038
● 0005 ● 0002

