



**IPC**

BY TENNANT COMPANY

VACUUM CLEANERS - WET & DRY - PROFESSIONAL

# YS 2/45 W&D

POWER MAX

2800

W

WATER LIFT

2230

mmH<sub>2</sub>O

AIRFLOW

510

m<sup>3</sup>/h

TANK CAPACITY

45

l

## EXCLUSIVE FEATURES

- ▶ AP TUBE
- ▶ SANIFILTER
- ▶ INNOVATIVE GASKET
- ▶ STRONG HOOKS
- ▶ INDEPENDENT MOTORS WITH LIGHT SWITCHES
- ▶ SEALANT FLOATER & INTEGRATED ANTIFOAM SYSTEM
- ▶ RELIABLE CONSTRUCTION FOR INTENSIVE USE



## MOST FREQUENTLY USE

HORECA

RETAIL

HEALTHCARE

EDUCATION

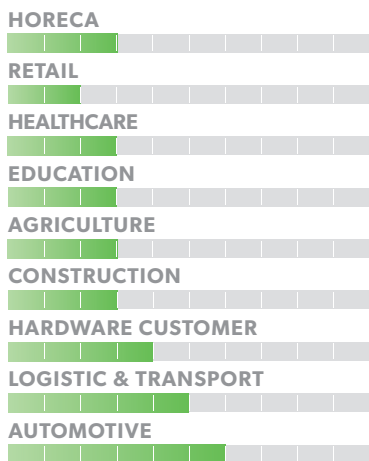
AGRICULTURE

CONSTRUCTION

HARDWARE CUSTOMER

LOGISTIC & TRANSPORT

AUTOMOTIVE



## INNOVATIONS



BLACK IS GREEN™

## SPECS



TROLLEY WITH SWIVELLING WHEELS



LIGHT SWITCHES



FLEXIBLE HOSE IS LOCKED SECURELY AND RELIABLY

## TECHNICAL DATA

		<b>YS 2/45 W&amp;D</b>
Code		ASD015079
PERFORMANCE		
Usage		WET & DRY
Motor		2x single stage
Power	W	2400 - 2800 max
Voltage	V	220 - 240
Water lift	mmH <sub>2</sub> O	2230
Airflow	m <sup>3</sup> /h	510
Tank Capacity/Material	l	45/steel
Cable length	m	8,5
Sound Pressure Level (EN 60704-1; EN 60704-2-1; IEC 60335-2-69)	dB(A)	74
Diameter of inlet	mm	60
Diameter of accessories	mm	38
Dimensions (LxWxH)	mm	480x480x780
Weight	Kg	20

## STANDARD EQUIPMENT

CODE: TBFX88583  
**FLEXIBLE HOSE 2,5 m  
Ø38 mm**



CODE: LAFN43048 (FOR 1 PC)  
**ALUMINIUM/PLASTIC  
TUBE 50 cm Ø38 mm**  
(MACHINE COMES WITH 2PCS)



CODE: MPVR43047  
**HANDLE WITH AIR  
REGULATOR Ø38 mm**



CODE: SPPV43050  
**DUST TOOL Ø38 mm**



CODE: SPPV43051  
**WET TOOL Ø38 mm**



CODE: SPPV00156  
**FLAT LANCE Ø38 mm**



CODE: SPPV43052  
**ROUND BRUSH Ø38 mm**



CODE: MPVR43049  
**ADAPTER**



CODE: FTDP28733  
**DRY FILTERING KIT**

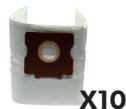


## OPTIONAL ACCESSORIES

CODE: KTRI02912  
**PAPER BAG SET OF 10 PCS**



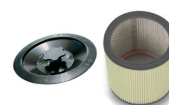
CODE: KTRI04796  
**MICROFIBER BAG SET  
OF 10 PCS**



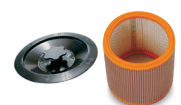
CODE: FTDP00223  
**PREFILTER PCB**



CODE: FTDP00654  
**WASHABLE CARTRIDGE  
KIT W/RING AND GASKET**



CODE: FTDP00657  
**HEPA CARTRIDGE KIT W/  
RING AND GASKET**



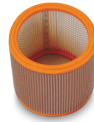
CODE: MPVR28723  
**FASTENING PLASTIC RING**



CODE: FTDP44260  
**WASHABLE POLYESTER  
CARTRIDGE (AVAILABLE  
AS SPARE PART) 3.000 cm<sup>2</sup>**



CODE: FTDP28844  
**HEPA H13 CARTRIDGE  
(AVAILABLE AS SPARE PART)  
3.000 cm<sup>2</sup>**



CODE: FTDP28755  
**MESH FILTER**



CODE: KTRI06274  
**3D WET FILTERING KIT FOR  
MIXTURES**



CODE: KTRI06214  
**DFS HEPA H14 KIT**



CODE: SPPV01336  
**CARPET BRUSH Ø38 mm**



CODE: KTRI02735  
**CONDUCTIVE TOOL KIT  
Ø38 mm  
(FOR STEEL TANK MODEL)**



CODE: SPPV37133  
**BRISTLE BRUSH Ø38 mm**

