



VACUUM CLEANERS - WET & DRY - PROFESSIONAL

YP 2/62 W&D

YS 2/62 W&D

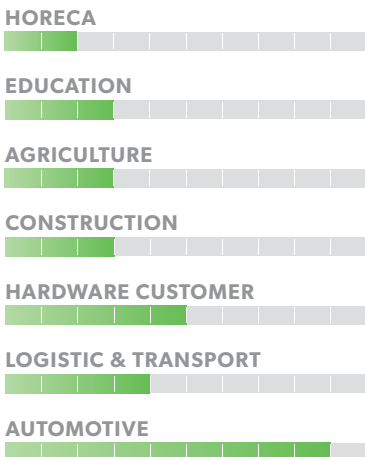
| POWER MAX | WATER LIFT | AIRFLOW | TANK CAPACITY |
|-----------|----------------------------|--------------------------|---------------|
| 2800 W | 2230 mmH ₂ O | 510 m ³ /h | 62 l |



EXCLUSIVE FEATURES

- ▶ AP TUBE
- ▶ SANIFILTER
- ▶ INNOVATIVE GASKET
- ▶ STRONG HOOKS
- ▶ INDEPENDENT MOTORS WITH LIGHT SWITCHES
- ▶ SEALANT FLOATER & INTEGRATED ANTIFOAM SYSTEM
- ▶ RELIABLE CONSTRUCTION FOR INTENSIVE USE

MOST FREQUENTLY USE



INNOVATIONS



SPECS



ANTI-FOAM SYSTEM



TROLLEY WITH HANDLE



LIGHT SWITCHES

TECHNICAL DATA

| | | YP 2/62 W&D | YS 2/62 W&D |
|--|--------------------|------------------------|------------------------|
| Code | | ASD015074 | ASD015081 |
| PERFORMANCE | | | |
| Usage | | WET & DRY | WET & DRY |
| Motor | | 2x single stage | 2x single stage |
| Power | W | 2400 - 2800 max | 2400 - 2800 max |
| Voltage | V | 220 - 240 | 220 - 240 |
| Water lift | mmH ₂ O | 2230 | 2230 |
| Airflow | m ³ /h | 510 | 510 |
| Tank Capacity/Material | l | 62/plastic | 62/plastic |
| Cable length | m | 8,5 | 8,5 |
| Sound Pressure Level (EN 60704-1; EN 60704-2-1; IEC 60335-2-69) | dB(A) | 74 | 74 |
| Diameter of inlet | mm | 60 | 60 |
| Diameter of accessories | mm | 38 | 38 |
| Dimensions (LxWxH) | mm | 540x480x880 | 540x480x880 |
| Weight | Kg | 21 | 21 |

STANDARD EQUIPMENT

CODE: TBFX88583
**FLEXIBLE HOSE 2,5 m
Ø38 mm**



CODE: LAFN43048 (FOR 1 PC)
**ALUMINIUM/PLASTIC
TUBE 50 cm Ø38 mm**
(MACHINE COMES WITH 2PCS)



CODE: MPVR43047
**HANDLE WITH AIR
REGULATOR Ø38 mm**



CODE: SPPV43050
DUST TOOL Ø38 mm



CODE: SPPV43051
WET TOOL Ø38 mm



CODE: SPPV00156
FLAT LANCE Ø38 mm



CODE: SPPV43052
ROUND BRUSH Ø38 mm



CODE: MPVR43049
ADAPTER



CODE: FTDP28733
DRY FILTERING KIT

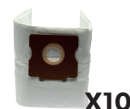


OPTIONAL ACCESSORIES

CODE: KTRI02912
PAPER BAG SET OF 10 PCS



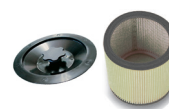
CODE: KTRI04796
**MICROFIBER BAG SET
OF 10 PCS**



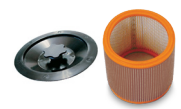
CODE: FTDP00223
PREFILTER PCB



CODE: FTDP00654
**WASHABLE CARTRIDGE
KIT W/RING AND GASKET**



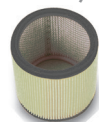
CODE: FTDP00657
**HEPA CARTRIDGE KIT W/
RING AND GASKET**



CODE: MPVR28723
FASTENING PLASTIC RING



CODE: FTDP44260
**WASHABLE POLYESTER
CARTRIDGE (AVAILABLE
AS SPARE PART) 3.000 cm²**



CODE: FTDP28844
**HEPA H13 CARTRIDGE
(AVAILABLE AS SPARE PART)
3.000 cm²**



CODE: FTDP28755
MESH FILTER



CODE: KTRI06274
**3D WET FILTERING KIT FOR
MIXTURES**



CODE: KTRI06214
DFS HEPA H14 KIT



CODE: SPPV01336
CARPET BRUSH Ø38 mm



CODE: KTRI02735
**CONDUCTIVE TOOL KIT
Ø38 mm
(FOR STEEL TANK MODEL)**



CODE: SPPV37133
BRISTLE BRUSH Ø38 mm

