



IPC

BY TENNANT COMPANY

VACUUM CLEANERS - WET & DRY - PREMIUM

# GP 3/72 W&D GS 3/78 W&D GS 3/78 W&D DFS HEPA

POWER MAX	WATER LIFT	AIRFLOW	TANK CAPACITY
3300 W	2470 mmH <sub>2</sub> O	630 m <sup>3</sup> /h	72,78 l

### EXCLUSIVE FEATURES

- ▶ AP TUBE
- ▶ SANIFILTER
- ▶ INNOVATIVE GASKET
- ▶ STRONG HOOKS
- ▶ INDEPENDENT MOTORS WITH LIGHT SWITCHES
- ▶ SEALANT FLOATER & INTEGRATED ANTIFOAM SYSTEM
- ▶ TIPPING TROLLEY
- ▶ RELIABLE CONSTRUCTION FOR INTENSIVE USE
- ▶ DETACHABLE TANK AND SOLID CART
- ▶ DOUBLE STAGE POWERFUL MOTORS
- ▶ DFS HEPA H14 SYSTEM FOR SIMULTANEOUS WET AND DRY PICK UP



MICROFIBER BAG INCLUDED

### MOST FREQUENTLY USE



### INNOVATIONS



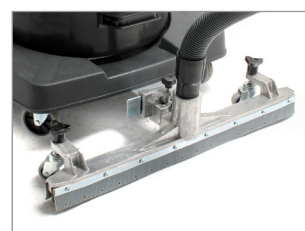
### SPECS



TIPPING TANK



SYSTEM DFS FOR SIMULTANEOUS DRY AND WET PICK UP



OPTIONAL FIXED ACCESSORY

## TECHNICAL DATA

		<b>GP 3/72 W&amp;D</b>	<b>GS 3/78 W&amp;D</b>	<b>GS 3/78 W&amp;D DFS HEPA</b>
Code		ASDO15029	ASDO15044	ASDO15117
PERFORMANCE				
Usage		WET&DRY	WET&DRY	WET&DRY
Motor		3	3	3
Power	W	2900 - 3300 max	2900 - 3300 max	2900 - 3300 max
Voltage	V	220 - 240	220 - 240	220 - 240
Water lift	mmH <sub>2</sub> O	2470	2470	2470
Airflow	m <sup>3</sup> /h	630	630	630
Tank Capacity/Material	l	72/plastic	78/steel	78/steel
Cable length	m	8.5	8.5	8.5
Sound Pressure Level (EN 60704-1; EN 60704-2-1; IEC 60335-2-69)	dB(A)	76	76	76
Diameter of inlet	mm	60	60	60
Diameter of accessories	mm	38	38	38
Dimensions (LxWxH)	mm	550x600x1030	550x600x980	550x600x980
Weight	Kg	23,0	24,0	24,0

## STANDARD EQUIPMENT

CODE: TBFX01231  
**EXTRA STRONG FLEXIBLE HOSE 2,5 m Ø38 mm**



CODE: LAFN43048 (FOR 1 PC)  
**ALUMINIUM/PLASTIC TUBE 50 cm Ø38 mm**  
(MACHINE COMES WITH 2PCS)



CODE: MPVR43047  
**HANDLE WITH AIR REGULATOR Ø38 mm**



CODE: SPPV43050  
**DUST TOOL Ø38 mm**



CODE: SPPV43051  
**WET TOOL Ø38 mm**



CODE: SPPV00156  
**FLAT LANCE Ø38 mm**



CODE: SPPV43052  
**ROUND BRUSH Ø38 mm**



CODE: MPVR43049  
**ADAPTER**



CODE: FTDP28733  
**DRY FILTERING KIT (FOR 72 L MODELS)**



CODE: KTRI02949  
**DRY FILTERING KIT (FOR 78 L MODELS)**



CODE: FTDP00846  
**HEPA H14 + POLY CARTRIDGE 2.960 cm<sup>2</sup> (ONLY FOR DFS MODEL)**

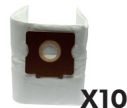


## OPTIONAL ACCESSORIES

CODE: KTRI02912  
**PAPER BAG SET OF 10 PCS**



CODE: KTRI04796  
**MICROFIBER BAG SET OF 10 PCS**



CODE: FTDP00223  
**PREFILTER PCB**



CODE: FTDP00654  
**WASHABLE CARTRIDGE KIT W/RING AND GASKET**



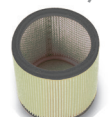
CODE: FTDP00657  
**HEPA CARTRIDGE KIT W/RING AND GASKET**



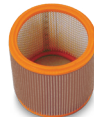
CODE: MPVR28723  
**FASTENING PLASTIC RING**



CODE: FTDP44260  
**WASHABLE POLYESTER CARTRIDGE (AVAILABLE AS SPARE PART) 3.000 cm<sup>2</sup>**



CODE: FTDP28844  
**HEPA H13 CARTRIDGE (AVAILABLE AS SPARE PART) 3.000 cm<sup>2</sup>**



CODE: FTDP28755  
**MESH FILTER**



CODE: SPPV01336  
**CARPET BRUSH Ø38 mm**



CODE: SPPV28248  
**FIXED ACCESSORY FOR LIQUID**



CODE: SPPV28247  
**FIXED ACCESSORY FOR DUST**



CODE: SPPV30894  
**FIXED ACCESSORY FOR DUST AND LIQUIDS**



CODE: KTRI06274  
**3D WET FILTERING KIT FOR MIXTURES (FOR 72 LITERS TANK)**



CODE: KTRI06214  
**DFS HEPA H14 KIT (FOR 72 LT MODELS)**



CODE: KTRI06275  
**DFS HEPA H14 KIT (FOR 78 LT MODELS)**



CODE: KTRI02735  
**CONDUCTIVE TOOL KIT Ø38 mm (FOR STEEL TANK MODEL)**



CODE: SPPV37133  
**BRISTLE BRUSH Ø38 mm**

