



VACUUM CLEANERS - WET & DRY - PREMIUM

# GP 1/35 W&D GS 1/41 W&D

POWER MAX

1200  
W

WATER LIFT

2470  
mmH<sub>2</sub>O

AIRFLOW

210  
m<sup>3</sup>/h

TANK CAPACITY

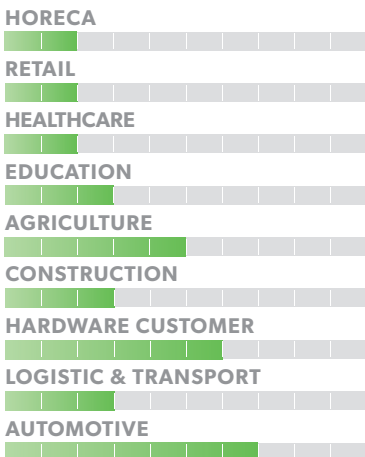
35 l  
41 l

## EXCLUSIVE FEATURES

- ▶ AP TUBE
- ▶ SANIFILTER
- ▶ INNOVATIVE GASKET
- ▶ STRONG HOOKS
- ▶ SEALANT FLOATER & INTEGRATED ANTIFOAM SYSTEM
- ▶ RELIABLE CONSTRUCTION FOR INTENSIVE USE
- ▶ DOUBLE STAGE POWERFUL MOTOR



## MOST FREQUENTLY USE



## INNOVATIONS

- BLACK IS GREEN™
- HIGHEST PERFORMANCE DOUBLE STAGE MOTORS
- NEW BLEND FLEXIBLE HOSE

## SPECS



INNOVATIVE HEAD GASKET



INTEGRATED ANTI-FOAM SYSTEM



AP TUBES ARE LIGHTWEIGHT AND EXTREMELY ROBUST

## TECHNICAL DATA

		<b>GP1/35 W&amp;D</b>	<b>GS1/41 W&amp;D</b>
Code		ASD015019	ASD015039
<b>PERFORMANCE</b>			
Usage		WET&DRY	WET&DRY
Motor		1x 2-stage	1x 2-stage
Power	W	1000 - 1200 max	1000 - 1200 max
Voltage	V	220 - 240	220 - 240
Water lift	mmH <sub>2</sub> O	2470	2470
Airflow	m <sup>3</sup> /h	210	210
Tank Capacity/Material	l	35/plastic	41/steel
Cable length	m	8,5	8,5
Sound Pressure Level (EN 60704-1; EN 60704-2-1; IEC 60335-2-69)	dB(A)	72	72
Diameter of accessories	mm	38	38
Dimensions (LxWxH)	mm	450x460x840	380x380x900
Weight	Kg	11,0	13,0

## STANDARD EQUIPMENT

CODE: FTDP00079  
**DRY FILTERING KIT  
(FOR GP 1/35 W&D)**



CODE: KTRI02943  
**DRY FILTERING KIT  
(FOR GS 1/41 W&D)**



CODE: TBFX01166  
**EXTRA STRONG FLEXIBLE  
HOSE 2,5 m Ø38 mm**



CODE: LAFN43048 (FOR 1 PC)  
**ALUMINIUM/PLASTIC  
TUBES 2X50 cm Ø38 mm  
(MACHINE COMES WITH 2PCS)**



CODE: MPVR43047  
**HANDLE WITH AIR  
REGULATOR Ø38 mm**



CODE: SPPV43050  
**DUST TOOL Ø38 mm**



CODE: SPPV43051  
**WET TOOL Ø38 mm**



CODE: SPPV00156  
**FLAT LANCE Ø38 mm**



CODE: SPPV43052  
**ROUND BRUSH Ø38 mm**



CODE: MPVR43049  
**ADAPTER**



## OPTIONAL ACCESSORIES

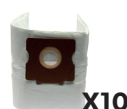
CODE: KTRI03035  
**PAPER BAG SET OF 10 PCS  
(FOR GP 1/35 W&D)**



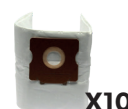
CODE: KTRI03166  
**PAPER BAG SET OF 10 PCS  
(FOR GS 1/41 W&D)**



CODE: KTRI04795  
**MICROFIBER BAG SET OF 10  
PCS (FOR GP 1/35 W&D)**



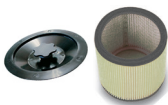
CODE: KTRI04797  
**MICROFIBER BAG SET OF  
10 PCS (FOR GS 1/41 W&D)**



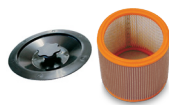
CODE: FTDP00222  
**PREFILTER PCB**



CODE: FTDP00654  
**WASHABLE CARTRIDGE  
KIT W/RING AND GASKET**



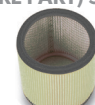
CODE: FTDP00657  
**HEPA CARTRIDGE KIT W/  
RING AND GASKET**



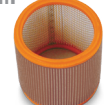
CODE: MPVR28723  
**FASTENING PLASTIC RING**



CODE: FTDP44260  
**WASHABLE POLYESTER  
CARTRIDGE (AVAILABLE  
AS SPARE PART) 3.000 cm<sup>2</sup>**



CODE: FTDP28844  
**HEPA H13 CARTRIDGE  
(AVAILABLE AS SPARE PART)  
3.000 cm<sup>2</sup>**



CODE: FTDP28755  
**MESH FILTER**



CODE: KTRI03005  
**FILTERING KIT SUITABLE  
(FOR GS 1/41 W&D)**



CODE: KTRI06273  
**3D WET FILTERING KIT  
(FOR GS 1/41 W&D)**



CODE: KTRI02735  
**CONDUCTIVE TOOL KIT  
Ø38 mm  
(FOR STEEL TANK MODEL)**



CODE: SPPV37133  
**BRISTLE BRUSH Ø38 mm**



CODE: SPPV01336  
**CARPET BRUSH Ø38 mm**

