



IPC

BY TENNANT COMPANY

VACUUM CLEANERS - WET & DRY - LIGHT INDUSTRIAL

GC 1/35 W&D



POWER MAX

1200
W

WATER LIFT

2470
mmH₂O

AIRFLOW

210
m³/h

TANK CAPACITY

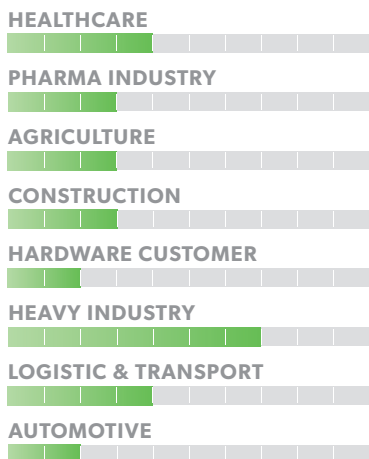
35
l



EXCLUSIVE FEATURES

- ▶ SANIFILTER
- ▶ INNOVATIVE GASKET
- ▶ STRONG HOOKS
- ▶ SEALANT FLOATER & INTEGRATED ANTIFOAM SYSTEM
- ▶ RELIABLE CONSTRUCTION FOR INTENSIVE USE
- ▶ DOUBLE STAGE MOTOR
- ▶ MICROFIBER BAG

MOST FREQUENTLY USE



INNOVATIONS



SPECS



ULTRA-SHOCKPROOF PLASTIC TANK



ANTI-FOAM SYSTEM



FLEXIBLE HOSE IS LOCKED SECURELY AND RELIABLY

TECHNICAL DATA

		GC1/35 W&D
Code		ASD015049
PERFORMANCE		
Usage		WET&DRY
Motor		1x 2-stage
Power	W	1000 - 1200 max
Voltage	V	220-240
Water lift	mmH ₂ O	2470
Airflow	m ³ /h	210
Tank Capacity/Material	l	35/plastic (polyethylene)
Cable length	m	8,5
Sound Pressure Level (EN 60704-1; EN 60704-2-1; IEC 60335-2-69)	dB(A)	72
Diameter of accessories	mm	38
Dimensions (LxWxH)	mm	380x380x660
Weight	Kg	10,0

STANDARD EQUIPMENT

CODE: KTRI02943
DRY FILTERING KIT



CODE: FTDP41885
NYLON FILTER



CODE: TBFX01165
EXTRA STRONG FLEXIBLE HOSE 2,5 m Ø38 mm



CODE: MPVR00152
PLASTIC TUBE 50 cm Ø38 mm(FOR 1 PIECE)



CODE: LAFN28240
DOUBLE STEEL WAND Ø38 mm



CODE: SPPV37133
BRISTLE BRUSH Ø38 mm



CODE: SPPV00103
WET BRUSH Ø 38 mm



CODE: SPPV00156
FLAT LANCE Ø 38 mm



CODE: SPPV43052
ROUND BRUSH Ø 38 mm



CODE: MPVR43049
ADAPTER



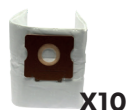
OPTIONAL ACCESSORIES

CODE: KTRI03035
PAPER BAG SET OF 10 PCS



X10

CODE: KTRI04795
MICROFIBER BAG SET OF 10 PCS

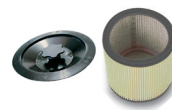


X10

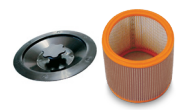
CODE: FTDP00222
PREFILTER PCB



CODE: FTDP00654
WASHABLE CARTRIDGE KIT W/RING AND GASKET



CODE: FTDP00657
HEPA CARTRIDGE KIT W/ RING AND GASKET



CODE: MPVR28723
FASTENING PLASTIC RING



CODE: FTDP44260
WASHABLE POLYESTER CARTRIDGE (AVAILABLE AS SPARE PART) 3.000 cm²



CODE: FTDP28844
HEPA H13 CARTRIDGE (AVAILABLE AS SPARE PART) 3.000 cm²



CODE: FTDP28755
MESH FILTER



CODE: SPPV01336
CARPET BRUSH Ø38 mm

