



**IPC**

BY TENNANT COMPANY

**SWEEPERS - RIDE ON**

# 1280

**MAX PRODUCTIVITY**

7440 m<sup>2</sup>/h

**MAIN BRUSH PATH**

680 mm

**VOLTAGE SYSTEM**

12-24 v



BATTERIES AND BATTERY CHARGER NOT INCLUDED

**MOST FREQUENTLY USE**

RETAIL



HORECA



CLEANING CONTRACTORS



MUNICIPALITIES



**INNOVATIONS**



DUAL POWER



DBL™  
DOUBLE BATTERY LIFE



SERVICE MENU



SOFT CLEANING SURFACE

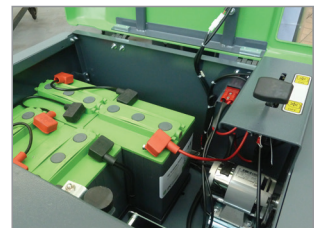
**SPECS**



HOPPER HYDRAULIC DISCHARGE SYSTEM



PLEATED FILTER



BATTERY BOX

## TECHNICAL DATA

|                                |                   | 1280 E          | 1280 DP-P       | 1280 P           | 1280 D          |
|--------------------------------|-------------------|-----------------|-----------------|------------------|-----------------|
| Code                           |                   | MSUB00609       | MSUB00617       | MSUB00613        | MSUB00624       |
| <b>PERFORMANCE</b>             |                   |                 |                 |                  |                 |
| Main brush cleaning path width | mm                | 680             | 680             | 680              | 680             |
| Side brush cleaning path width | mm                | 1200            | 1200            | 1150             | 1150            |
| Max theoretical productivity   | m <sup>2</sup> /h | 7440            | 7440            | 7130             | 7130            |
| Voltage                        | V-Ah              | 24              | 24              | 12               | 12              |
| Installed power                | W /HP             | 1530            | 1530            | 4,5              | 4,7             |
| Hopper capacity                | l                 | 67              | 67              | 67               | 67              |
| Hopper Discarghe System        | Type/mm           | Hydraulic -1420 | Hydraulic -1420 | Hydraulic -14220 | Hydraulic -1420 |
| Filtering surface              | m <sup>2</sup>    | 1,8             | 1,8             | 1,8              | 1,8             |
| Fylder type                    |                   | Pleated filter  | Pleated filter  | Pleated filter   | Pleated filter  |
| Max speed                      | km/h              | 6,2             | 6,2             | 6,2              | 6,2             |
| Max Climb                      | %                 | 12              | 12              | 12               | 12              |
| Weight whitout batteries       | kg                | 336             | 379             | 344              | 444             |
| Dimension (LxWxH)              | mm                | 1615x905x1210   | 1615x905x1210   | 1615x905x1210    | 1615x905x1210   |

## STANDARD ACCESSORIES

|                | 1280 E    | 1280 DP-P | 1280 P    | 1280 D    |
|----------------|-----------|-----------|-----------|-----------|
| <b>BRUSHES</b> |           |           |           |           |
| MAIN BRUSH     | SPPV75791 | SPPV75791 | SPPV75791 | SPPV75791 |
| SIDE BRUSH     | SPPV00018 | SPPV00018 | SPPV00018 | SPPV00018 |
| <b>FILTERS</b> |           |           |           |           |
| FILTER         | FTDP00214 | FTDP00214 | FTDP00214 | FTDP00214 |

## OPTIONAL ACCESSORIES

CODE: KTRI02279  
FRONT BUMPER KIT

CODE: KTRI02280  
FRONT LIGHT KIT (FOR  
1280 E - 1280 DP-P)

CODE: KTRI05056  
FRONT LIGHT KIT  
(FOR 1280 P - 1280 D)

CODE: KTRI04766  
NON-MARKING FLAPS

CODE: KTRI02348  
NON-MARKING WHEELS

CODE: KTRI02342  
250 AH C5 BATTERY  
LOCKING SYSTEM

## BATTERIES AND BATTERY CHARGERS

| BATTERIES                               | N° | CHARACTERISTIC | DIMENSION   | RUNNING TIME | BATTERY CHARGERS                              |
|---|----|----------------|-------------|--------------|---|
| IPC gel battery<br>BAAC00106            | 4  | 6V 180 Ah (C5) | 244X192X275 | 180          | Stand alone high frequency BLS020 - BACA00134 |
| EXIDE gel battery<br>BAAC00026          | 4  | 6V 180 Ah (C5) | 246X192X275 | 170          | Stand alone high frequency BLS020 - BACA00134 |
| Acid tubolar plate<br>BAAC00074         | 4  | 6V 185 Ah (C5) | 240X190X275 | 175          | Stand alone high frequency BLS020 - BACA00134 |
| GEL battery *<br>BAAC00108              | 4  | 6V 250 Ah (C5) | 305X180X365 | 270          | Stand alone high frequency BLS020 - BACA00134 |
| EXIDE gel battery *<br>BAAC00017        | 4  | 6V 240 Ah (C5) | 311X183X358 | 250          | Stand alone high frequency BLS020 - BACA00134 |
| Acid tubolar plate<br>battery BAAC00136 | 2  | 12V 85 Ah (C5) | 308x175x225 | 60           | Stand alone high frequency BLS010 - BACA00133 |

\* RECOMMENDED WITH KTRI02342

RECOMMENDED BATTERIES AND BATTERY CHARGERS