



SWEEPERS - RIDE ON

1250

MAX PRODUCTIVITY

7440 m²/h

MAIN BRUSH PATH

680 mm

VOLTAGE SYSTEM

12-24 v



BATTERIES AND BATTERY CHARGER NOT INCLUDED

MOST FREQUENTLY USE



INNOVATIONS



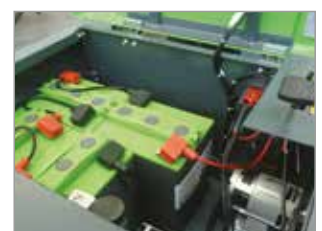
SPECS



CONTROL PANEL



DUAL POWER



BATTERY BOX

TECHNICAL DATA

		1250 E	1250 DP-P	1250 P
Code		MSUB00606	MSUB00614	MSUB00610
PERFORMANCE				
Main brush cleaning path width	mm	680	680	680
Side brush cleaning path width	mm	1200	1200	1150
Max theoretical productivity	m ² /h	7440	7440	7130
Voltage	V-Ah	24	24	12
Installed power	W /HP	1480	1530	4,5 Hp
Hopper capacity	l	67	67	67
Hopper Discarghe System	Type/mm	Low-Manual	Low-Manual	Low-Manual
Filtering surface	m ²	3,3	3,3	3,3
Fylter type		Panel - Paper	Panel -paper	Panel - Paper
Max speed	km/h	6,2	6,2	6,2
Max Climb	%	12	12	12
Weight whitout batteries	kg	258	325	288
Dimension (LxWxH)	mm	1615x905x1210	1615x905x1210	1615x905x1210

STANDARD ACCESSORIES

	1250 E	1250 DP-P	1250 P
BRUSHES			
MAIN BRUSH	SPPV75791	SPPV75791	SPPV75791
SIDE BRUSH	SPPV00018	SPPV00018	SPPV00018
FILTERS			
FILTER	FTDP76067	FTDP76067	FTDP76067

OPTIONAL ACCESSORIES

CODE: KTRI02279
FRONT BUMPER KIT

CODE: KTRI02280
FRONT LIGHT KIT
(FOR 1250 E - 1250 DP-P)

CODE: KTRI05056
FRONT LIGHT KIT
(FOR 1250 P)

CODE: KTRI04766
NON-MARKING FLAPS

CODE: KTRI02348
NON-MARKING WHEELS

CODE: KTRI02342
250 AH C5 BATTERY
LOCKING SYSTEM

BATTERIES AND BATTERY CHARGERS

BATTERIES	N°	CHARACTERISTIC	DIMENSION	RUNNING TIME	BATTERY CHARGERS
IPC gel battery BAAC00106	4	6V 180 Ah (C5)	244X192X275	180	Stand alone high frequency BLS020 - BACA00134
EXIDE gel battery BAAC00026	4	6V 180 Ah (C5)	246X192X275	170	Stand alone high frequency BLS020 - BACA00134
Acid tubolar plate BAAC00074	4	6V 185 Ah (C5)	240X190X275	175	Stand alone high frequency BLS020 - BACA00134
GEL battery * BAAC00108	4	6V 222 Ah (C5)	305X180X365	270	Stand alone high frequency BLS020 - BACA00134
EXIDE gel battery * BAAC00017	4	6V 222 Ah (C5)	311X183X358	250	Stand alone high frequency BLS020 - BACA00134
Acid tubolar plate battery BAAC00136	2	12V 85 Ah (C5)	308x175x225	60	Stand alone high frequency BLS010 - BACA00133

* RECOMMENDED WITH KTRI02342