



IPC

BY TENNANT COMPANY

UV150B

CORDLESS

Commercial Vacuum



USER GUIDE

MODEL UV150B

PART # T80454

2	Safety Instructions
3	Product View
4	Assembly Instructions
5	Operating Instructions
6-8	Maintenance
9-10	Maintenance
11	Troubleshooting

IMPORTANT SAFETY INSTRUCTIONS

READ ALL INSTRUCTIONS BEFORE USING THIS APPLIANCE.

IMPORTANT:

The manufacturer cannot accept responsibility for damage caused when the appliance is not used according to the instructions, or for uses other than those for which it was intended.

When using an electrical appliance, basic precautions should be observed, including the following:

READ ALL INSTRUCTIONS BEFORE USING YOUR
IPC UV150B COMMERCIAL VACUUM.

⚠ WARNING:

To reduce the risk of fire, electric shock, or injury:

To reduce the risk of fire, electric shock, or injury:

- Do not leave vacuum cleaner unattended when it is plugged into battery.
- Do not use outdoors or on wet surfaces.
- Do not allow children to operate vacuum cleaner or use as toy.
- Close attention is necessary when used by or near children.
- Do not use for any purpose other than described in this User's Guide.
- If appliance is not working as it should, has been dropped, damaged, left outdoors, or dropped into water, have it repaired at an authorized service center.
- Do not handle vacuum cleaner or plug with wet hands.
- Do not put any object into openings. Do not use with any opening blocked; keep openings free of dust, lint, hair and anything that may reduce air flow.
- Keep hair, loose clothing, fingers, and all parts of body away from openings and moving parts.
- Turn off all controls before plugging or unplugging vacuum cleaner.
- Use extra care when cleaning stairs.
- Do not pick up flammable materials, lighter fluid, gasoline, kerosene, etc.) or use in the presence of explosive liquids or vapors.
- Do not pick up toxic materials (chlorine bleach, ammonia, drain cleaner, etc.
- Do not use vacuum cleaner in an enclosed space filled with vapors given off by oil base paint, paint thinner, some moth proofing substances, flammable dust, or other explosive or toxic vapors.
- Do not pick up hard or sharp objects such as glass, nails, screws, coins, etc.
- Do not pick up anything that is burning or smoking, such as cigarettes, matches, or hot ashes.
- Do not use without filters in place.
- Use only on dry, indoor surfaces.
- Keep appliance on a level surface.
- Do not carry the vacuum cleaner while it is running.

- Do not operate cleaner in bare feet or when wearing open-toe shoes or sandals.
- Do not use without dust bag in place. Shake bag frequently when picking up very fine materials such as powder.

SAVE THESE INSTRUCTIONS

THIS MODEL IS FOR COMMERCIAL USE.

- Fully assemble vacuum before operating.
- Do not use charger with damaged cord or plug. If appliance or charger is not working as it should, has been dropped, damaged, left outdoors, or dropped into water, return it to your Authorized IPC Dealer.
- Do not unplug charger by pulling on cord. To unplug charger, grasp the plug, not the cord.
- Do not handle charger, including charger plug, and charger terminals with wet hands.
- Do not use without vacuum bag in place.
- Use extra care when cleaning on stairs.
- Do not attempt to service the unit while charger is plugged in.
- Do not charge the unit outdoors.
- Only charge in temperatures between 0-45°C (32-113°F).
- Do not open, crush, expose to heat above 100°C (212°F) or incinerate the battery even if it is severely damaged. The battery can explode in a fire.
- Do not use with a damaged battery or charger. If the appliance is not working as it should, has been dropped, damaged, left outdoors, or dropped into water, return it to your Authorized IPC Dealer.
- Use only with the Cordless Battery Vacuum Charger supplied.
- The battery and charger have no user serviceable parts.
- Batteries must be disposed of responsibly. Contact your Authorized IPC Dealer information on battery disposal.
- Remove the battery before doing any repairs.
- Stop using the battery if abnormal heat, odor, discoloration, deformation or abnormal condition is detected.
- Do not use or leave battery close to high temperature area, such as fire, heater etc.
- When charging the battery, use dedicated chargers and follow the specified conditions.
- Do not connect battery directly to an electric outlet.
- Do not heat or throw battery into a fire or heater.
- Do not short circuit the (+) and (-) terminals with other metals.
- Do not put batteries together with metal objects, such as necklaces, hairpins, coins, or screws, in storage or transportation.
- Do not hit with hammer, step on or throw or drop to cause strong shock.
- Do not pierce battery with sharp object such as a needle.

Product View



Assembly Instructions

1. With handle front forwards.

Insert the end of the upper handle into the top of the vacuum as shown in the illustration at left. Push down firmly until the upper handle is seated all the way in the vacuum.

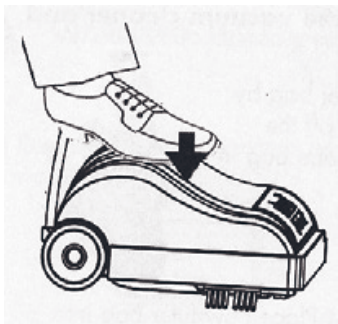
2. Tighten the upper collar

3. Charge battery fully before using.



Operating Instructions

HANDLE RELEASE



To release the handle, press on the base of the vacuum with your foot as shown at left. The handle is now free to lower for normal vacuuming.

Turn vacuum on/off by stepping on front pedal on base.

HANDLE LOCKING

When finished vacuuming you may lock the handle in the upright position as shown at left by simply moving the handle up until it stops.

IMPORTANT! Never leave the vacuum cleaner running in this position as it may cause damage to the floor or to your vacuum cleaner.

MAXIMUM HANDLE RETRACTION

The vacuum handle can be lowered all the way to the floor for cleaning under chairs and low furniture. Simply push down on the handle (as shown to left) and lower it to the desired height.



MAINTENANCE

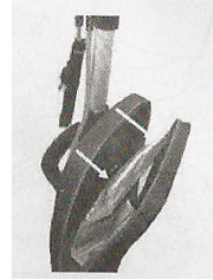
CHANGE THE FILTER BAG

Refer to the illustrations below. **ALWAYS** switch off the vacuum cleaner and unplug before replacing the filter bag.

1. Unzip the outer bag



2. Remove the filter bag by pulling the collar off the connector and place bag in trash.



3. Connector for filter bag.



4. Place new filter bag into outer bag and push cardboard collar on filter bag onto connector.



5. Press on edges of filter bag collar to insure the filter bag is completely installed.

IMPORTANT:

Check to make sure filter bag collar is behind the lips of the connector. This will prevent dust from leaking into outer bag.

6. Zip outer bag close.

IMPORTANT! Never attempt to empty and reuse a filter bag. This will degrade the performance of your vacuum cleaner and may cause damage to the vacuum cleaner.

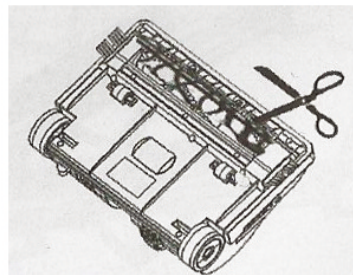
CLEANING A BRUSH ROLL JAM

IMPORTANT! DO NOT ATTEMPT TO TOUCH THE BRUSH ROLL OR CLEAR THE BRUSH ROLL OF ANY OBSTRUCTION WITHOUT SWITCHING THE VACUUM OFF AND UNPLUGGING IT FROM THE BATTERY . FAILURE TO DO SO MAY RESULT IN PERSONAL INJURY.

1. Carefully inspect the brush roll for tangled hair, carpet strings or large debris. Beware of any sharp objects that may have become lodged in the brush roll area. **DO NOT** pull on anything that has jammed tightly around the brush roll as it may damage the vacuum cleaner.

2. Use scissors to carefully cut these objects off the brush roll and remove them from the vacuum cleaner.

3. Changing the brush should be performed by an authorized IPC Commercial vacuum dealer.

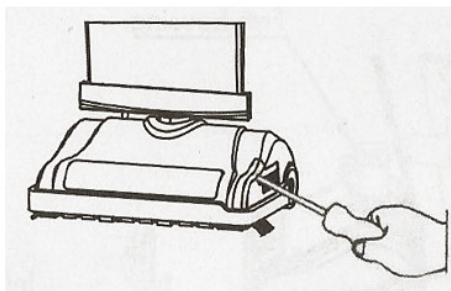


MAINTENANCE

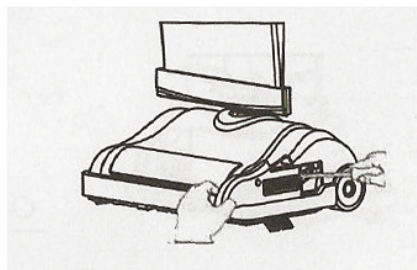
CHECKING THE DRIVE BELT

 **WARNING: Remove battery before servicing.**

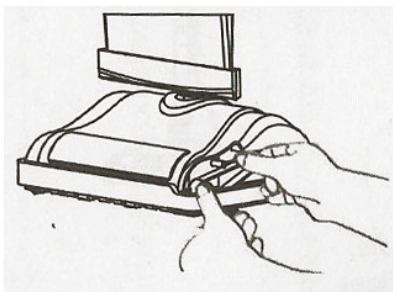
1) Remove the screw located on side of power head



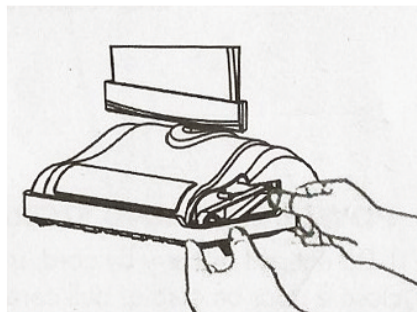
2) Slide the door forward by prying open with a screwdriver or coin.



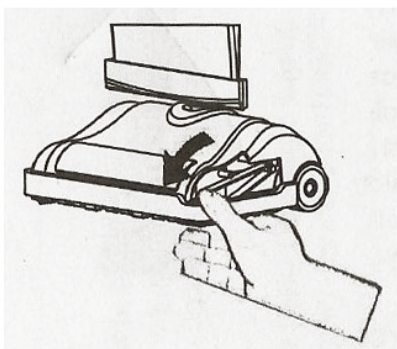
3) Remove the belt from the brush roll pulley and the motor drive shaft, clean the residue off the brush roll pulley if needed.



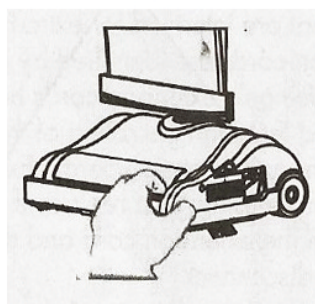
4) Loop the new belt over the motor drive shaft. Place the opposite end of the belt on the brush roll pulley.



5) Rotate the brush roll several complete revolutions to ensure that no part of the belt is overhanging the end of the motor drive shaft.



6) Slide the door back and replace screw.

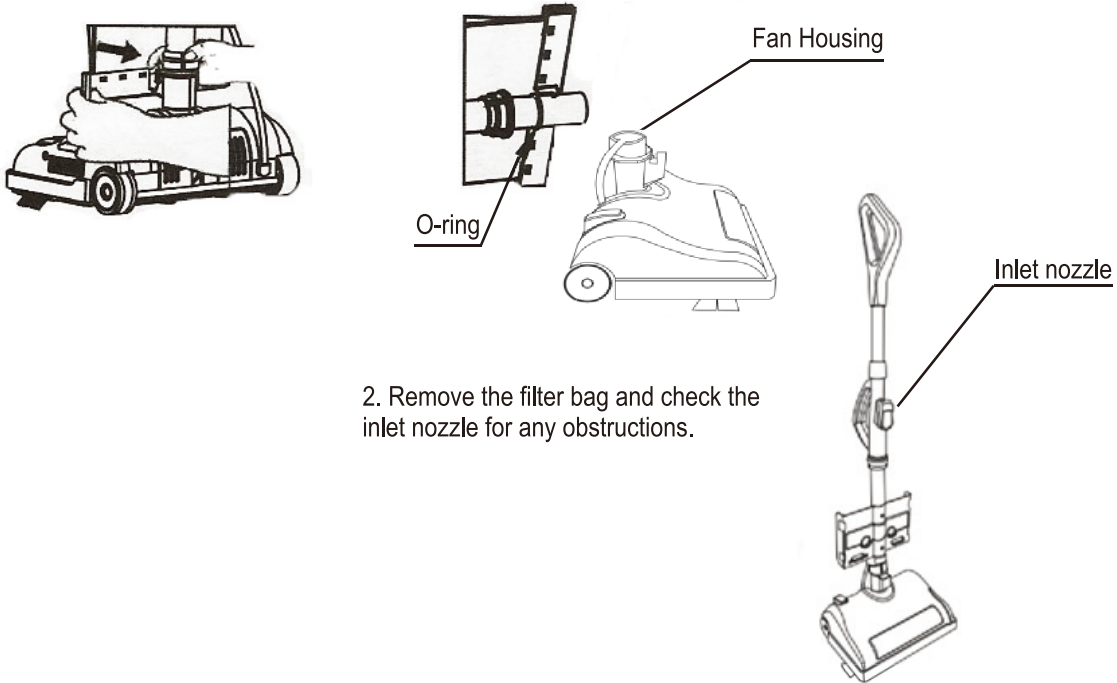


MAINTENANCE

CLEARING A CLOGGED VACUUM CLEANER

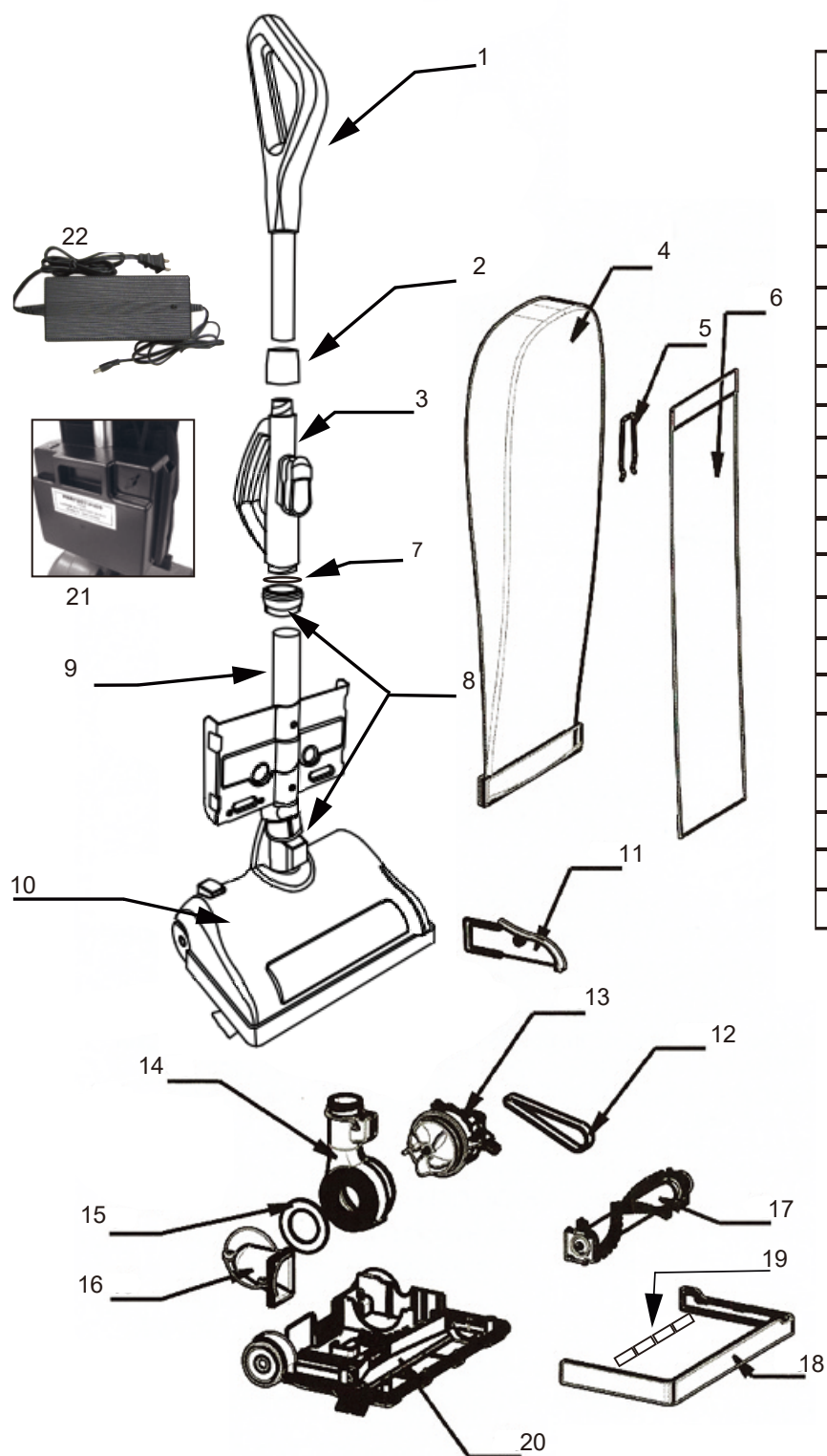
⚠ WARNING: Remove battery before servicing.

1. Unhook the bottom of the outer bag. Twist lower collar counterclockwise to slide up. Pull the tube out of the base, and check if there are obstructions in the tube and the fan housing. Remove the obstructions. Also check O-ring on the tube, and replace if damaged.

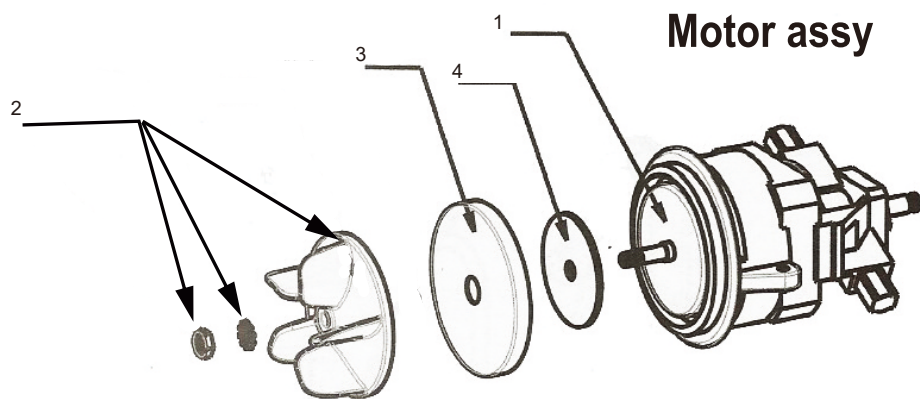


2. Remove the filter bag and check the inlet nozzle for any obstructions.

Parts List

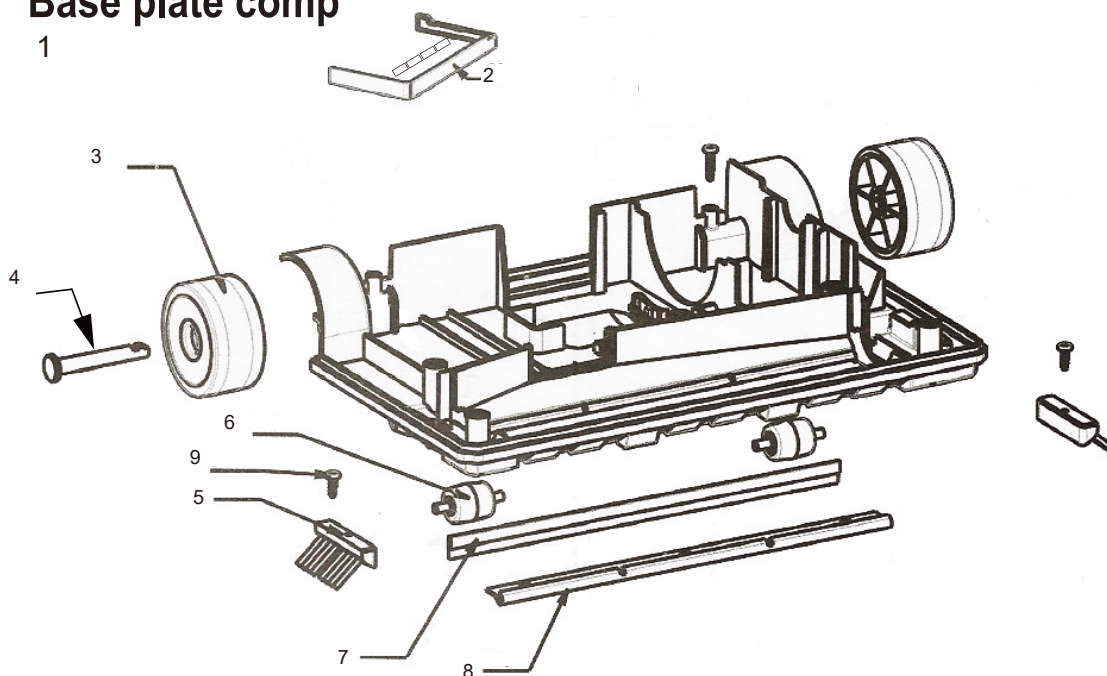


No.	Description
1	Handle tube comp.
2	Upper retaining collar
3	Carry handle
4	Cloth Bag
5	Retaining clip
6	Paper bag
7	O ring
8	Lower retaining collar
9	Lower tube assy
10	Hood assy
11	Belt cover
12	Belt
13	Motor assy
14	Air duct/swivel
15	Inlet duct gasket
16	Inlet duct
17	Brush roller
18	Furniture guard w/magnets
19	Magnet only 4EA/set
20	Base Plate comp.
21	Battery
22	Charger



No.	Description	No.	Description
1	Motor assy complete	3	Motor cover
2	Fan Assy	4	Motor felt

Base plate comp

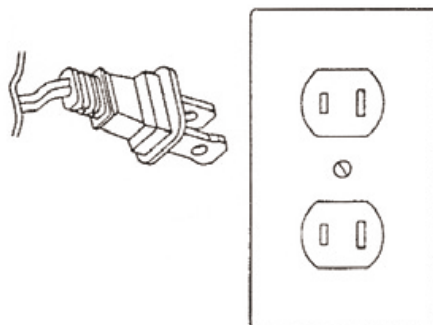


No.	Description	No.	Description
1	Base plate comp.	6	Front roller w/shaft
2	Furniture guard	7	Rubber blade
3	Rear wheel w/oil bearing	8	Bottom metal plate
4	Rear wheel shaft	9	Side brush screw
5	Side Brush		

POLARIZATION INSTRUCTIONS

Power Cord, 2-Wire Polarized Cord

To reduce the risk of electric shock, the charger is equipped with a polarized alternating current line plug (a plug having one blade wider than the other). This plug will fit into the power outlet only one way. This is a safety feature. If you are unable to insert the plug fully into the outlet, try reversing the plug. If the plug should still fail to fit, contact a qualified electrician to replace the obsolete outlet. Do not defeat the safety purpose of the polarized plug.



Make sure Battery is full charged before you use for the first time.

PROBLEM SOLVING GUIDE

Troubleshooting

WARNING! To Reduce the Risk of Electric Shock or Injury From Moving Parts, Unplug the Charger from the Charge Port and remove the Battery Before Servicing or Cleaning the Vacuum.

CAUTION! To Reduce the Risk of Electric Shock, Do Not Handle Charger Plug or Appliance with Wet Hands.

PROBLEM	POSSIBLE REASON	POSSIBLE SOLUTION
Vacuum won't turn on	<ul style="list-style-type: none">• Battery is fully discharged• Needs Service	<ul style="list-style-type: none">• Charge battery• Take to Authorized Perfect® Dealer
Vacuum won't pick up or low suction	<ul style="list-style-type: none">• Vacuum bag full• Broken belt• Worn brushroll	<ul style="list-style-type: none">• Install new bag• Replace belt• Replace brushroll
Dust escaping from vacuum	<ul style="list-style-type: none">• Vacuum bag not installed properly	<ul style="list-style-type: none">• Install bag properly.Review bag installation

Any other service should be performed by an Authorized IPC Dealer.

Key Replacement Parts

- Genuine HEPA Media Vacuum Bags
- Genuine Vacuum Belts

For Best Performance

- Keep your vacuum clean and in good operating condition.
- Change the vacuum bag once a month or when the bag is 2/3 full to maximize cleaning performance.
- Always use genuine vacuum bags and replacement parts. Use of other products may result in poor cleaning performance, potential vacuum cleaner damage and may void vacuum warranty. Genuine products are designed for maximum cleaning performance.
- Have your vacuum checked annually by your Authorized IPC Dealer.
- Store your vacuum carefully in a dry area.
- For optimum cleaning performance and safety, follow your owner's manual instructions.