



VACUUM CLEANERS - SPECIAL SOLUTIONS - CLEANROOM & HIGH FILTRATION

# PHARMA

# NEW

POWER MAX

1000 W

WATER LIFT

2515 mmH<sub>2</sub>O

AIRFLOW

163 m<sup>3</sup>/h

TANK CAPACITY

15 l

## EXCLUSIVE FEATURES

- ▶ MULTI STAGE FILTRATION
- ▶ H FILTER CLASSIFICATION
- ▶ FULL FILTER INDICATOR
- ▶ RELIABLE CONSTRUCTION FOR INTENSIVE USE
- ▶ STAINLESS STEEL AISI 316 AUTOCLAVABLE
- ▶ ISO4 CLASSIFICATION - CLEANROOM APPROVED
- ▶ HIGH FILTRATION CERTIFIED AND CHECKED BY SERIAL NUMBER
- ▶ FULL UNIT HEPA TESTING CERTIFICATION AGAINST LEAKAGES



## MOST FREQUENTLY USE

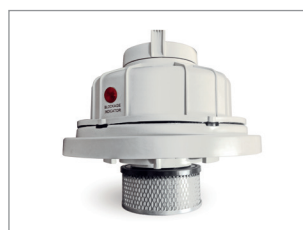
HEALTHCARE



PHARMA INDUSTRY



## SPECS



WARNING LIGHT FOR SPEED CONTROL >20M/S



FIVE FILTRATION LEVELS WITH HEPA H14 AND ULPA U15 FILTERS



FULLY AUTOCLAVABLE

## TECHNICAL DATA

Code		<b>PHARMA</b>
		ASID00096
PERFORMANCE		
Usage		DRY
Motor		1
Power	W	1000 max
Voltage	V	220-240
Water lift	mmHz0	2515
Airflow	m <sup>3</sup> /h	163
Tank Capacity/Material	l	15/steel
Cable length	m	8,5
Filtering surface	cm <sup>2</sup>	10.000
Sound Pressure Level (EN 60704-1; EN 60704-2-1; IEC 60335-2-69)	dB(A)	64
Diameter of accessories	mm	32
Dimensions (LxWxH)	mm	360x530x740
Weight	kg	18,0

## STANDARD EQUIPMENT

CODE: FTDP00612  
HEPA CARTRIDGE



CODE: FTDP00614  
ULPA CARTRIDGE



CODE: FTDP00611  
HEPA FILTER PROTECTION



CODE: FTDP00615  
CLOTH FILTER



CODE: FTDP00422  
PAPER BAG SET OF 5 PCS



X5

## OPTIONAL ACCESSORIES

### CODE: PMDT00014 - AUTOCLAVABLE DRY ACCESSORIES KIT Ø32 MM

EPDM HOSE ASSEMBLY



STAINLESS STEEL 316  
EXTENSION TUBES



STAINLESS STEEL 316  
FLOOR TOOL



CLEAR SILICONE CURVED  
CONICAL NOZZLE



STAINLESS STEEL 316 FLAT  
LANCE



### CODE: PMDT00290 - DRY ACCESSORIES KIT Ø32 MM

CLEAR URETHANE HOSE  
ASSEMBLY



STAINLESS STEEL  
EXTENSION TUBES



FLOOR TOOL WITH  
RUBBER BLADES



FLOOR TOOL WITH  
BRUSHES



PVC FLAT LANCE



PVC SMALL TOOL



ROUND TOOL WITH  
RUBBER BLADES

