



VACUUM CLEANERS - DUST EXTRACTORS - HEAVY TOOLINGS

NEW

GS 3 MBAG OPT CYC

POWER MAX

3500 W

WATER LIFT

2230 mmH₂O

AIRFLOW

765 m³/h

BAG CAPACITY

20 m

EXCLUSIVE FEATURES

- ▶ MAXIBAG COLLECTION SYSTEM
- ▶ DETACHABLE SYSTEM FOR QUICK REPLACEMENT OF MAXIBAG
- ▶ SELF DISCHARGE VALVE WITH BEST SEALING
- ▶ AISI 430 INDUSTRIAL FRAMEWORK
- ▶ BIG AND BRAKED WHEELS
- ▶ MULTI STAGE FILTRATION
- ▶ ELECTROSTATIC DISSIPATION
- ▶ INNOVATIVE GASKET
- ▶ STRONG HOOKS
- ▶ INDEPENDENT MOTORS WITH LIGHT SWITCHES
- ▶ MICROFIBER BAG
- ▶ HEPA H13 CARTRIDGE
- ▶ RELIABLE COSTRUCTION FOR INTENSIVE USE



MOST FREQUENTLY USE

CONSTRUCTION



HEAVY INDUSTRY



INNOVATIONS



SPECS



SELF DISCHARGE VALVE



MAXIBAG COLLECTION SYSTEM



ALUMINIUM INLET

TECHNICAL DATA

		GS 3 MBAG OPT CYC
Code		ASD013435
PERFORMANCE		
Usage		DRY
Motor		3
Power	W	3400-3500 max
Voltage	V	220-240
Water lift	mmH ₂ O	2230
Airflow	m ³ /h	765
Bag capacity	m	20
Cable length	m	8,5
Filtering surface	cm ²	2260
Sound Pressure Level (EN 60704-1; EN 60704-2-1; IEC 60335-2-69)	dB(A)	76
Diameter of inlet	mm	60 / metal
Dimensions (LxWxH)	mm	600x620x1727
Weight	kg	56

STANDARD EQUIPMENT

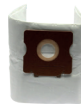
CODE: MPVR28723
FASTENING PLASTIC RING



CODE: FTDP28843
HEPA H13 CARTRIDGE
2.260 cm²



CODE: FTDP00462
MICROFIBER BAG 1PC



CODE: MISC00025
LONGOPAC



CODE: TBFX01270
CONDUCTIVE FLEXIBLE
HOSE 5 m Ø50/60 mm



CODE: LAFN49581
COMPLETE ALUMINIUM
DOUBLE WAND Ø50 mm



CODE: SPPV01960
BRISTLE BRUSH Ø50 mm

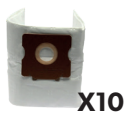


CODE: SPPV49597
RUBBER FLAT LANCE
Ø50 mm



OPTIONAL ACCESSORIES

CODE: KTRI04795
MICROFIBER BAG SET OF
10 PCS



CODE: KTRI02735
CONDUCTIVE KIT TOOL
Ø38 mm



CODE: SPPV37133
BRISTLE BRUSH Ø38 mm

