



VACUUM CLEANERS - SPECIAL SOLUTIONS - FLOODED AREA EMPTYING

GS 2/62 FM

POWER MAX

2600 W

WATER LIFT

3800

mmH₂O
Flowmix On

AIRFLOW

400

m³/h
Flowmix off

TANK CAPACITY

62 l

EXCLUSIVE FEATURES

- ▶ AP TUBE
- ▶ SANIFILTER
- ▶ INNOVATIVE GASKET
- ▶ STRONG HOOKS
- ▶ INDEPENDENT MOTORS WITH LIGHT SWITCHES
- ▶ SEALANT FLOATER & INTEGRATED ANTIFOAM SYSTEM
- ▶ DRAIN HOSE
- ▶ RELIABLE CONSTRUCTION FOR INTENSIVE USE
- ▶ DOUBLE STAGE MOTORS



MOST FREQUENTLY USE

AGRICULTURE



CONSTRUCTION



HARDWARE CUSTOMER



HEAVY INDUSTRY



AUTOMOTIVE



INNOVATIONS



SPECS



FLOWMIX - TO INCREASE WATERLIFT PERFORMANCE BY 60%.



DRAIN HOSE



INTEGRATED ANTI-FOAM SYSTEM

TECHNICAL DATA

Code	GS 2/62 FM	
PERFORMANCE	ASDO15047	
Usage	WET&DRY	
Motor	2	
Power	W	2200 - 2600 max
Voltage	V	220 - 240
Water lift	mmH ₂ O	2380 (FM OFF) / 3800 (FM ON)
Airflow	m ³ /h	400 (FM OFF) / 220 (FM ON)
Tank Capacity/Material	l	62/steel
Cable length	m	8,5
Sound Pressure Level (EN 60704-1; EN 60704-2-1; IEC 60335-2-69)	dB(A)	72
Diameter of accessories	mm	38
Dimensions (LxWxH)	mm	550x600x960
Weight	kg	21,0

STANDARD EQUIPMENT

CODE: FTDP28733
FILTERING KIT



CODE: TBFX00542
FLEXIBLE HOSE 2,5 m
Ø38 mm



CODE: LAFN43048 (FOR 1 PC)
ALUMINIUM/PLASTIC
TUBE 50 cm Ø38 mm
(MACHINE COMES WITH 2PCS)



CODE: MPVR43047
HANDLE WITH AIR
REGULATOR Ø38 mm



CODE: SPPV43050
DUST TOOL Ø38 mm



CODE: SPPV43051
WET TOOL Ø38 mm



CODE: SPPV00156
FLAT LANCE Ø38 mm



CODE: SPPV43052
ROUND BRUSH Ø38 mm



CODE: MPVR43049
ADAPTER

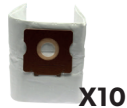


OPTIONAL ACCESSORIES

CODE: KTRI02912
PAPER BAG SET OF 10 PCS



CODE: KTRI04796
MICROFIBER BAG SET OF
10 PCS



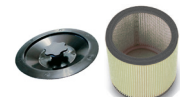
CODE: FTDP00223
PREFILTER PCB



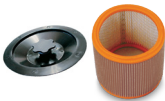
CODE: FTDP00659
PAPER CARTRIDGE KIT W/
RING AND GASKET



CODE: FTDP00654
WASHABLE CARTRIDGE
KIT W/RING AND GASKET



CODE: FTDP00657
HEPA CARTRIDGE KIT W/
RING AND GASKET



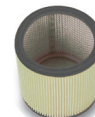
CODE: MPVR28723
FASTENING PLASTIC RING



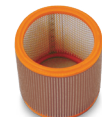
CODE: FTDP00528
PAPER CARTRIDGE



CODE: FTDP00583
WASHABLE CARTRIDGE



CODE: FTDP28844
HEPA CARTRIDGE



CODE: SPPV01336
CARPET BRUSH Ø38 mm



CODE: SPPV28248
FIXED ACCESSORY FOR
LIQUID



CODE: SPPV28247
FIXED ACCESSORY FOR
DUST



CODE: SPPV30894
FIXED ACCESSORY FOR
DUST AND LIQUIDS



CODE: MPVR10391
OPTIONAL TOOL HOLDER



CODE: KTRI02735
CONDUCTIVE TOOL KIT
Ø38 mm



CODE: SPPV37133
BRISTLE BRUSH Ø38 mm



CODE: FTDP28755
MESH FILTER

