



VACUUM CLEANERS - DUST EXTRACTORS - PROFESSIONAL TOOLINGS

GS 1/33 H TC

POWER MAX	WATER LIFT	AIRFLOW	TANK CAPACITY
1200 w	2470 mmH ₂ O	210 m ³ /h	33 l

EXCLUSIVE FEATURES

- ▶ INNOVATIVE GASKET
- ▶ STRONG HOOKS
- ▶ SCREWING CONNECTION
- ▶ TELECONTROL
- ▶ H FILTER CLASSIFICATION
- ▶ MICROFIBER BAG
- ▶ RELIABLE CONSTRUCTION FOR INTENSIVE USE
- ▶ MULTI STAGE FILTRATION
- ▶ DOUBLE STAGE MOTOR
- ▶ HEPA H13 CARTRIDGE
- ▶ FILTER OVERPRESSURE INDICATORS
- ▶ SAFETY DISPOSAL SYSTEMS
- ▶ RESISTANT FRAMEWORK AND INLET PLUG FOR SAFE TRANSFER
- ▶ ELECTROSTATIC DISSIPATION



MOST FREQUENTLY USE



INNOVATIONS



SPECS



WARNING LIGHT FOR SPEED CONTROL > 20M/S



HIGH EFFICIENCY H13 HEPA CARTRIDGE



FILTER BAG WITH SAFETY VALVE FOR DISPOSAL

TECHNICAL DATA

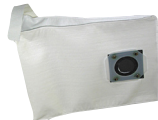
		GS 1/33 HTC	
Code		ASD015514	
PERFORMANCE			
Usage		DRY	
Motor		1	
Power	W	1000-1200 max [2600 W additional plug]	
Voltage	V	220-240	
Water lift	mmH ₂ O	2470	
Airflow	m ³ /h	210	
Tank Capacity/Material	l	33/steel	
Cable length	m	8,5	
Filtering surface	cm ²	10.500	
Sound Pressure Level (EN 60704-1; EN 60704-2-1; IEC 60335-2-69)	dB(A)	72	
Diameter of accessories	mm	36	
Dimensions (LxWxH)	mm	380x380x650	
Weight	kg	12,0	

STANDARD EQUIPMENT

CODE: FTDP40006
HEPA H13 CARTRIDGE



CODE: FTDP00327
NON-WOVEN BAG
W/SAFETY VALVE



CODE: PMDT01000 ACCESSORIES KIT Ø36 MM COMPOSED OF:

CODE: TBFX01500
CONDUCTIVE FLEXIBLE
HOSE 4 m



CODE: MPVR85407 (FOR 1 PC)
PLASTIC TUBE 50 cm
(MACHINE COMES WITH 2PCS)



CODE: LAFN10880
CONDUCTIVE WAND WITH
AIR REGULATOR



CODE: SPPV33288
DUST TOOL



CODE: SPPV28242
FLAT LANCE



CODE: SPPV28243
ROUND BRUSH



CODE: MPVR06998
TOOL ADAPTER



OPTIONAL ACCESSORIES

CODE: KTRI05204
MICROFIBER BAG CLASS M
SET OF 10 PCS



X10

CODE: RCVR00936
COMPLETE CAP FOR INLET
(FOR SAFE DISPOSAL)



CODE: MPVR11542
COVER FOR DRILL



CODE: PMDT00411
ELECTRIC KIT Ø29 mm

