



VACUUM CLEANERS - WET & DRY - PREMIUM

# GP 2/72 W&D GS 2/78 W&D

POWER MAX

2600 W

WATER LIFT

2380 mmH<sub>2</sub>O

AIRFLOW

400 m<sup>3</sup>/h

TANK CAPACITY

72 l  
78 l

### EXCLUSIVE FEATURES

- ▶ AP TUBE
- ▶ SANIFILTER
- ▶ INNOVATIVE GASKET
- ▶ STRONG HOOKS
- ▶ INDEPENDENT MOTORS WITH LIGHT SWITCHES
- ▶ SEALANT FLOATER & INTEGRATED ANTIFOAM SYSTEM
- ▶ TIPPING TROLLEY
- ▶ RELIABLE CONSTRUCTION FOR INTENSIVE USE
- ▶ DETACHABLE TANK AND SOLID CART



### MOST FREQUENTLY USE

AGRICULTURE



COSTRUCTION



HARDWARE CUSTOMER



HEAVY INDUSTRY



LOGISTIC & TRANSPORT



AUTOMOTIVE



### INNOVATIONS



BLACK IS GREEN™



HIGH SPEED NEW GENERATION MOTORS

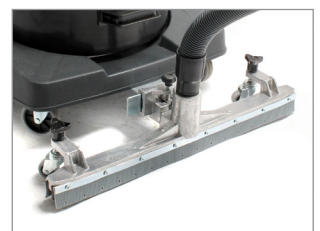
### SPECS



TIPPING TANK



FLEXIBLE HOSE IS LOCKED SECURELY AND RELIABLY



OPTIONAL FIXED ACCESSORY

## TECHNICAL DATA

		GP 2/72 W&D ASD015240	GS 2/78 W&D ASD015513
Code		ASD015240	ASD015513
<b>PERFORMANCE</b>			
Usage		WET&DRY	WET&DRY
Motor		2	2
Power	W	2200 - 2600 max	2200 - 2600 max
Voltage	V	220 - 240	220 - 240
Water lift	mmH <sub>2</sub> O	2380	2380
Airflow	m <sup>3</sup> /h	400	400
Tank Capacity/Material	l	72/plastic	78/steel
Cable length	m	8,5	8,5
Sound Pressure Level (EN 60704-1; EN 60704-2-1; IEC 60335-2-69)	dB(A)	72	72
Diameter of accessories	mm	38	38
Dimensions (LxWxH)	mm	550x600x1030	550x600x980
Weight	Kg	21,0	22,0

## STANDARD EQUIPMENT

CODE: TBFX00542  
**FLEXIBLE HOSE 2,5 m  
Ø38 mm**



CODE: LAFN43048 (FOR 1 PC)  
**ALUMINIUM/PLASTIC  
TUBE 50 cm Ø38 mm  
(MACHINE COMES WITH 2PCS)**



CODE: MPVR43047  
**HANDLE WITH AIR  
REGULATOR Ø38 mm**



CODE: SPPV43050  
**DUST TOOL Ø38 mm**



CODE: SPPV43051  
**WET TOOL Ø38 mm**



CODE: SPPV00156  
**FLAT LANCE Ø38 mm**



CODE: SPPV43052  
**ROUND BRUSH Ø38 mm**



CODE: MPVR43049  
**ADAPTER**



CODE: FTDP28733  
**FILTERING KIT  
(FOR GP 2/72 W&D)**



CODE: KTRI02949  
**FILTERING KIT  
(FOR GS 2/78 W&D)**



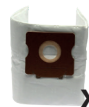
## OPTIONAL ACCESSORIES

CODE: KTRI02912  
**PAPER BAG SET OF 10 PCS**



X10

CODE: KTRI04796  
**MICROFIBER BAG SET OF  
10 PCS**



X10

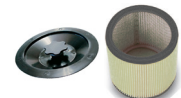
CODE: FTDP00223  
**PREFILTER PCB**



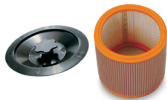
CODE: FTDP00659  
**PAPER CARTRIDGE KIT W/  
RING AND GASKET**



CODE: FTDP00654  
**WASHABLE CARTRIDGE  
KIT W/RING AND GASKET**



CODE: FTDP00657  
**HEPA CARTRIDGE KIT W/  
RING AND GASKET**



CODE: MPVR28723  
**FASTENING PLASTIC RING**



CODE: FTDP00528  
**PAPER CARTRIDGE  
(AVAILABLE AS SPARE PART)**



CODE: FTDP00583  
**WASHABLE CARTRIDGE  
(AVAILABLE AS SPARE PART)**



CODE: FTDP28844  
**HEPA CARTRIDGE  
(AVAILABLE AS SPARE PART)**



CODE: FTDP28755  
**MESH FILTER**



CODE: SPPV01336  
**CARPET BRUSH Ø38 mm**



CODE: SPPV28248  
**FIXED ACCESSORY FOR  
LIQUID**



CODE: SPPV28247  
**FIXED ACCESSORY FOR  
DUST**



CODE: SPPV30894  
**FIXED ACCESSORY FOR  
DUST AND LIQUIDS**



CODE: KTRI02735  
**CONDUCTIVE TOOL KIT  
Ø38 mm  
(FOR STEEL TANK MODEL)**



CODE: SPPV37133  
**BRISTLE BRUSH Ø38 mm**

