



VACUUM CLEANERS - ONLY DRY - PREMIUM

GP 1/16 ECO A

POWER MAX

870 W

WATER LIFT

2420
mmH₂O

AIRFLOW

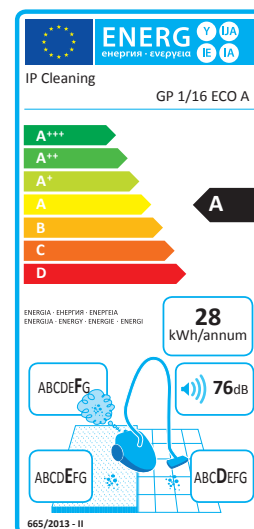
183 m³/h

TANK CAPACITY

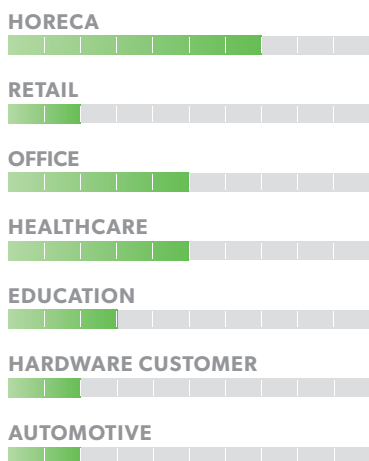
16 l

EXCLUSIVE FEATURES

- ▶ AP TUBE
- ▶ SANIFILTER
- ▶ INNOVATIVE GASKET
- ▶ STRONG HOOKS
- ▶ SCREWING CONNECTION
- ▶ ECOMOTOR
- ▶ ECOBRUSH
- ▶ ECOBAG
- ▶ MICROFIBER BAG
- ▶ RELIABLE CONSTRUCTION FOR INTENSIVE USE



MOST FREQUENTLY USE



INNOVATIONS



SPECS



NEW POWERFUL NOZZLE FOR HIGH CLEANING EFFICACY



CABLE HOOK



PARKING POSITION

TECHNICAL DATA

		GP 1/16 ECO A
Code		ASD015005
PERFORMANCE		
Usage		DRY
Energy Efficiency Class		A
Motor		1
Power	W	770-870
Voltage	V	220-240
Waterlift	mm H ₂ O	2420
Airflow	m ³ /h	183
Tank Capacity	l	16/plastic
Cable length	m	8,5
Sound Pressure Level (EN 60704-1; EN 60704-2-1; IEC 60335-2-69)	dB(A)	62
Sound Power Level (EN 60704-1; EN 60704-2-1; Reg. 665/2013, 666/2013)	dB(A)	76
Diameter of accessories	mm	36
Dimensions (LxWxH)	mm	380x380x500
Weight	Kg	8,0

STANDARD EQUIPMENT

CODE: KTRI03023
FILTERING KIT



CODE: -
MICROFIBER BAG



CODE: TBFX00704
FLEXIBLE HOSE 2 m
Ø36 mm



CODE: LAFN28238
ALUMINUM/PLASTIC
TUBES 2X50 cm Ø36 mm



CODE: LAFN85073
HANDLE WITH AIR
REGULATOR Ø36 mm



CODE: SPPV01990
DOUBLE USE BRUSH
ECO A Ø36 mm



CODE: SPPV28242
FLAT LANCE
Ø36 mm



CODE: SPPV28243
ROUND BRUSH
Ø36 mm

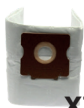


CODE: MPVR00141
SMALL TOOL Ø36 mm



OPTIONAL ACCESSORIES

CODE: KTRI04744
MICROFIBER BAG SET OF
10 PCS



X10

CODE: KTRI02639
PAPER BAG SET OF 10 PCS



X10

CODE: MPVR06274
CHROMED TELESCOPIC
TUBE Ø36 mm



CODE: LAFN06340
CHROMED TUBE Ø36 mm



CODE: KTRI05271
BRUSH W/HORSEHAIR
BRISTLES AND FELT PAD
Ø36 MM*



NEW

*class A for Hard Floor/Parquet

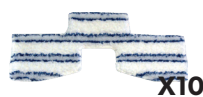
CODE: SPPV01989
DOUBLE USE BRUSH
Ø36 mm



CODE: SPPV02206
PAD PLATE FOR DOUBLE
USE BRUSH



CODE: KTRI05034
MULTIPURPOSE PAD SET
OF 10 PCS



X10

CODE: KTRI05035
PARQUET PAD SET OF 10
PCS



X10