



PS 1/41 M TC PS 1/41 M PN

POWER MAX	WATER LIFT	AIRFLOW	TANK CAPACITY
1200 w	2470 mmH ₂ O	210 m ³ /h	41 l

EXCLUSIVE FEATURES

- ▶ INNOVATIVE GASKET
- ▶ STRONG HOOKS
- ▶ SCREWING CONNECTION
- ▶ TELECONTROL
- ▶ M FILTER CLASSIFICATION
- ▶ MICROFIBER BAG
- ▶ RELIABLE CONSTRUCTION FOR INTENSIVE USE
- ▶ MULTI STAGE FILTRATION
- ▶ DOUBLE STAGE MOTOR
- ▶ AIR SUPPLY CONTROL AND ELECTROVALVES (FOR GS 1/41 M PN)
- ▶ ELECTROSTATIC DISSIPATION



PS 1/41 M TC

PS 1/41 M PN



MOST FREQUENTLY USE



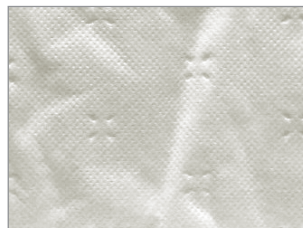
INNOVATIONS



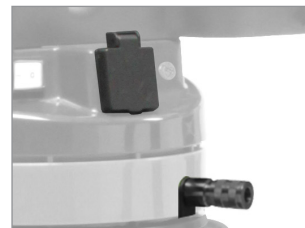
SPECS



TRAY FOR TOOLS



MICROFIBER BAG



SOCKET FOR POWER TOOL (TC) OR PNEUMATIC TOOL (PN) WITH AUTOMATIC START/STOP

TECHNICAL DATA

		PS 1/41 M TC ASD015104	PS 1/41 M PN ASD015111
Code			
PERFORMANCE			
Usage		DRY	DRY
Motor		1	1
Power	W	1000-1200 max (2600 W additional plug)	1000-1200 max
Voltage	V	220-240	220-240
Water lift	mmH ₂ O	2470	2470
Airflow	m ³ /h	210	210
Tank Capacity/Material	l	41/steel	41/steel
Cable length	m	8,5	8,5
Filtering surface	cm ²	10.500	10.500
Sound Pressure Level (EN 60704-1; EN 60704-2-1; IEC 60335-2-69)	dB(A)	72	72
Diameter of accessories	mm	36	36
Dimensions (LxWxH)	mm	380x380x780	380x380x780
Weight	kg	14,0	14,0

STANDARD EQUIPMENT

CODE: FTDP00322
PAPER CARTRIDGE



CODE: -
MICROFIBER BAG CLASS M



CODE: PMDT01000 ACCESSORIES KIT Ø36 MM FOR PS 1/41 M TC COMPOSED OF:

CODE: TBFX01500
CONDUCTIVE FLEXIBLE
HOSE 4 m



CODE: MPVR85407 (FOR 1 PC)
PLASTIC TUBE 50 cm
(MACHINE COMES WITH 2PCS)



CODE: LAFN10880
CONDUCTIVE WAND WITH
AIR REGULATOR



CODE: SPPV33288
DUST TOOL



CODE: SPPV28242
FLAT LANCE



CODE: SPPV28243
ROUND BRUSH



CODE: MPVR06998
TOOL ADAPTER



CODE: PMDT01001 ACCESSORIES KIT Ø36 MM FOR PS 1/41 M PN COMPOSED OF:

CODE: TBFX01500
CONDUCTIVE FLEXIBLE
HOSE 4 m



CODE: MPVR85407 (FOR 1 PC)
PLASTIC TUBE 50 cm
(MACHINE COMES WITH 2PCS)



CODE: LAFN10880
CONDUCTIVE WAND WITH
AIR REGULATOR



CODE: SPPV33288
DUST TOOL



CODE: SPPV28242
FLAT LANCE



CODE: SPPV28243
ROUND BRUSH



CODE: MPVR06998
TOOL ADAPTER



CODE: TBBP00655
ELASTORAN HOSE 4,5 m



CODE: MPVR85445 (FOR 1 PC)
CLIP
(MACHINE COMES WITH 9PCS)



OPTIONAL ACCESSORIES

CODE: KTRI05204
MICROFIBER BAG CLASS M
SET OF 10 PCS



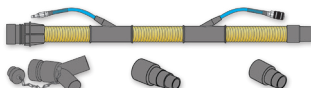
CODE: RCVR00936
COMPLETE CAP FOR INLET
(FOR SAFE DISPOSAL)



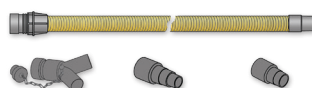
CODE: MPVR11542
COVER FOR DRILL



CODE: PMDT00412
ELECTRO-PNEUMATIC KIT Ø29 mm



CODE: PMDT00411
ELECTRIC KIT Ø29 mm



CODE: PMDT00410
ELECTRO-PNEUMATIC KIT Ø36 mm

