



VACUUM CLEANERS - WET & DRY - PROFESSIONAL

YS 2/45 W&D

POWER MAX

2800 W

WATER LIFT

2230 mmH₂O

AIRFLOW

510 m³/h

TANK CAPACITY

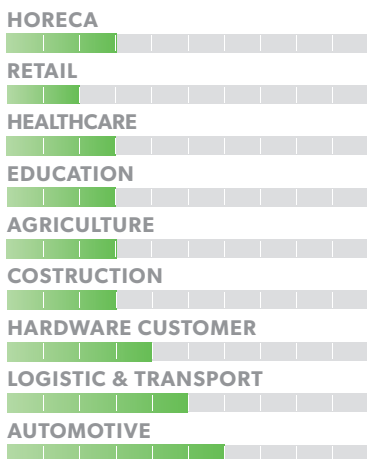
45 l

EXCLUSIVE FEATURES

- ▶ AP TUBE
- ▶ SANIFILTER
- ▶ INNOVATIVE GASKET
- ▶ STRONG HOOKS
- ▶ INDEPENDENT MOTORS WITH LIGHT SWITCHES
- ▶ SEALANT FLOATER & INTEGRATED ANTIFOAM SYSTEM
- ▶ RELIABLE CONSTRUCTION FOR INTENSIVE USE



MOST FREQUENTLY USE



INNOVATIONS



SPECS



TROLLEY WITH SWIVELLING WHEELS



LIGHT SWITCHES



FLEXIBLE HOSE IS LOCKED SECURELY AND RELIABLY

TECHNICAL DATA

		YS 2/45 W&D
Code		ASD015079
PERFORMANCE		
Usage		WET & DRY
Motor		2
Power	W	2400 - 2800 max
Voltage	V	220 - 240
Water lift	mmH ₂ O	2230
Airflow	m ³ /h	510
Tank Capacity/Material	l	45/steel
Cable length	m	8,5
Sound Pressure Level (EN 60704-1; EN 60704-2-1; IEC 60335-2-69)	dB(A)	74
Diameter of accessories	mm	38
Dimensions (LxWxH)	mm	480x480x780
Weight	Kg	20

STANDARD EQUIPMENT

CODE: TBFX00542
**FLEXIBLE HOSE 2,5 m
Ø38 mm**



CODE: LAFN43048 (FOR 1 PC)
**ALUMINIUM/PLASTIC
TUBE 50 cm Ø38 mm**
(MACHINE COMES WITH 2PCS)



CODE: MPVR43047
**HANDLE WITH AIR
REGULATOR Ø38 mm**



CODE: SPPV43050
DUST TOOL Ø38 mm



CODE: SPPV43051
WET TOOL Ø38 mm



CODE: SPPV00156
FLAT LANCE Ø38 mm



CODE: SPPV43052
ROUND BRUSH Ø38 mm



CODE: MPVR43049
ADAPTER



CODE: FTDP28733
FILTERING KIT

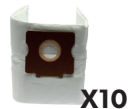


OPTIONAL ACCESSORIES

CODE: KTRI02912
PAPER BAG SET OF 10 PCS



CODE: KTRI04796
**MICROFIBER BAG SET
OF 10 PCS**



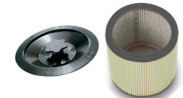
CODE: FTDP00223
PREFILTER PCB



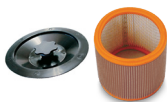
CODE: FTDP00659
**PAPER CARTRIDGE KIT W/
RING AND GASKET**



CODE: FTDP00654
**WASHABLE CARTRIDGE
KIT W/RING AND GASKET**



CODE: FTDP00657
**HEPA CARTRIDGE KIT W/
RING AND GASKET**



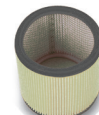
CODE: MPVR28723
FASTENING PLASTIC RING



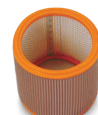
CODE: FTDP00528
**PAPER CARTRIDGE
(AVAILABLE AS SPARE PART)**



CODE: FTDP00583
**WASHABLE CARTRIDGE
(AVAILABLE AS SPARE PART)**



CODE: FTDP28844
**HEPA CARTRIDGE
(AVAILABLE AS SPARE PART)**



CODE: FTDP28755
MESH FILTER



CODE: SPPV01336
CARPET BRUSH Ø38 mm



CODE: KTRI02735
**CONDUCTIVE TOOL KIT
Ø38 mm
(FOR STEEL TANK MODEL)**



CODE: SPPV37133
BRISTLE BRUSH Ø38 mm

