



VACUUM CLEANERS - WET & DRY - PROFESSIONAL

# YP 1/27 W&D YS 1/27 W&D

POWER MAX

1500 W

WATER LIFT

2230 mmH<sub>2</sub>O

AIRFLOW

255 m<sup>3</sup>/h

TANK CAPACITY

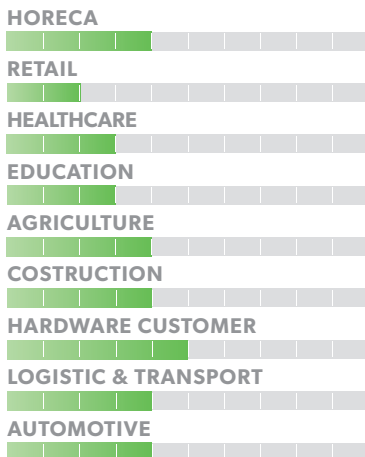
27 l



## EXCLUSIVE FEATURES

- ▶ AP TUBE
- ▶ SANIFILTER
- ▶ INNOVATIVE GASKET
- ▶ STRONG HOOKS
- ▶ SCREWING CONNECTION
- ▶ SEALANT FLOATER & INTEGRATED ANTIFOAM SYSTEM
- ▶ RELIABLE CONSTRUCTION FOR INTENSIVE USE

## MOST FREQUENTLY USE



## INNOVATIONS



## SPECS



INTEGRATED ANTI-FOAM SYSTEM



CABLE HOOK



INNOVATIVE HEAD GASKET

## TECHNICAL DATA

		YP1/27 W&D	YS1/27 W&D
Code		ASD015072	ASD015078
<b>PERFORMANCE</b>			
Usage		WET&DRY	WET&DRY
Motor		1	1
Power	W	1250 - 1500 max	1250 - 1500 max
Voltage	V	220 - 240	220 - 240
Water lift	mmH <sub>2</sub> O	2230	2230
Airflow	m <sup>3</sup> /h	255	255
Tank Capacity/Material	l	27/plastic	27/steel
Cable length	m	8,5	8,5
Sound Pressure Level (EN 60704-1; EN 60704-2-1; IEC 60335-2-69)	dB(A)	72	72
Diameter of accessories	mm	36	36
Dimensions (LxWxH)	mm	360x360x630	360x360x630
Weight	Kg	8,0	9,0

## STANDARD EQUIPMENT

CODE: TBFX00704  
FLEXIBLE HOSE 2 m  
Ø36 mm



CODE: LAFN28238 (FOR 1 PC)  
ALUMINIUM/PLASTIC  
TUBE 50 cm Ø36 mm  
(MACHINE COMES WITH 2PCS)



CODE: LAFN85073  
HANDLE WITH AIR  
REGULATOR Ø36 mm



CODE: SPPV01771  
DOUBLE USE BRUSH  
Ø36 mm



CODE: SPPV28245  
WET FLOOR TOOL  
Ø36 mm



CODE: SPPV28242  
FLAT LANCE Ø36 mm



CODE: SPPV28243  
ROUND BRUSH Ø36 mm



CODE: MPVR00141  
SMALL TOOL Ø36 mm



CODE: KTRI02133  
FILTERING KIT



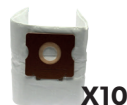
## OPTIONAL ACCESSORIES

CODE: KTRI03035  
PAPER BAG SET OF 10 PCS



X10

CODE: KTRI04795  
MICROFIBER BAG SET  
OF 10 PCS

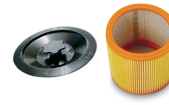


X10

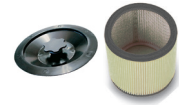
CODE: FTDP00222  
PREFILTER PCB



CODE: FTDP00659  
PAPER CARTRIDGE KIT W/  
RING AND GASKET



CODE: FTDP00654  
WASHABLE CARTRIDGE  
KIT W/RING AND GASKET



CODE: FTDP00657  
HEPA CARTRIDGE KIT W/  
RING AND GASKET



CODE: MPVR28723  
FASTENING PLASTIC RING



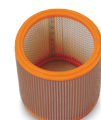
CODE: FTDP00528  
PAPER CARTRIDGE  
(AVAILABLE AS SPARE PART)



CODE: FTDP00583  
WASHABLE CARTRIDGE  
(AVAILABLE AS SPARE PART)



CODE: FTDP28844  
HEPA CARTRIDGE  
(AVAILABLE AS SPARE PART)



CODE: FTDP28755  
MESH FILTER



CODE: KTRI02734  
CONDUCTIVE TOOL KIT  
Ø36 mm  
(FOR STEEL TANK MODEL)

