



VACUUM CLEANERS - WET & DRY - PREMIUM

GP 1/35 W&D GS 1/41 W&D

POWER MAX

1300 W

WATER LIFT

2380 mmH₂O

AIRFLOW

200 m³/h

TANK CAPACITY

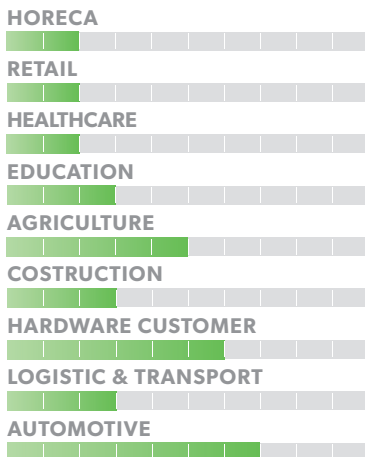
35 l
41 l



EXCLUSIVE FEATURES

- ▶ AP TUBE
- ▶ SANIFILTER
- ▶ INNOVATIVE GASKET
- ▶ STRONG HOOKS
- ▶ SEALANT FLOATER & INTEGRATED ANTIFOAM SYSTEM
- ▶ RELIABLE CONSTRUCTION FOR INTENSIVE USE

MOST FREQUENTLY USE



INNOVATIONS



SPECS



INNOVATIVE HEAD GASKET



INTEGRATED ANTI-FOAM SYSTEM



AP TUBES ARE LIGHTWEIGHT AND EXTREMELY ROBUST

TECHNICAL DATA

		GP1/35 W&D	GS1/41 W&D
Code		ASD015019	ASD015039
PERFORMANCE			
Usage		WET&DRY	WET&DRY
Motor		1	1
Power	W	1100 - 1300 max	1100 - 1300 max
Voltage	V	220-240	220-240
Water lift	mmH ₂ O	2380	2380
Airflow	m ³ /h	200	200
Tank Capacity/Material	l	35/plastic	41/steel
Cable length	m	8,5	8,5
Sound Pressure Level (EN 60704-1; EN 60704-2-1; IEC 60335-2-69)	dB(A)	70	70
Diameter of accessories	mm	38	38
Dimensions (LxWxH)	mm	450x460x840	380x380x900
Weight	Kg	11,0	13,0

STANDARD EQUIPMENT

CODE: KTRI02142
**FILTERING KIT
(FOR GP 1/35 W&D)**



CODE: KTRI02133
**FILTERING KIT
(FOR GS 1/41 W&D)**



CODE: TBFX00542
**FLEXIBLE HOSE 2,5 m
Ø38 mm**



CODE: LAFN43048 (FOR 1 PC)
**ALUMINIUM/PLASTIC
TUBES 2X50 cm Ø38 mm
(MACHINE COMES WITH 2PCS)**



CODE: MPVR43047
**HANDLE WITH AIR
REGULATOR Ø38 mm**



CODE: SPPV43050
DUST TOOL Ø38 mm



CODE: SPPV43051
WET TOOL Ø38 mm



CODE: SPPV00156
FLAT LANCE Ø38 mm



CODE: SPPV43052
ROUND BRUSH Ø38 mm



CODE: MPVR43049
ADAPTER



OPTIONAL ACCESSORIES

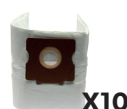
CODE: KTRI03035
**PAPER BAG SET OF 10 PCS
(FOR GP 1/35 W&D)**



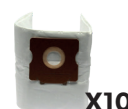
CODE: KTRI03166
**PAPER BAG SET OF 10 PCS
(FOR GS 1/41 W&D)**



CODE: KTRI04795
**MICROFIBER BAG SET OF 10
PCS (FOR GP 1/35 W&D)**



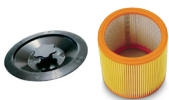
CODE: KTRI04797
**MICROFIBER BAG SET OF
10 PCS (FOR GS 1/41 W&D)**



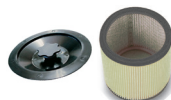
CODE: FTDP00222
PREFILTER PCB



CODE: FTDP00659
**PAPER CARTRIDGE KIT W/
RING AND GASKET**



CODE: FTDP00654
**WASHABLE CARTRIDGE
KIT W/RING AND GASKET**



CODE: FTDP00657
**HEPA CARTRIDGE KIT W/
RING AND GASKET**



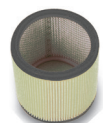
CODE: MPVR28723
FASTENING PLASTIC RING



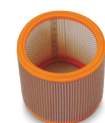
CODE: FTDP00528
**PAPER CARTRIDGE
(AVAILABLE AS SPARE PART)**



CODE: FTDP00583
**WASHABLE CARTRIDGE
(AVAILABLE AS SPARE PART)**



CODE: FTDP28844
**HEPA CARTRIDGE
(AVAILABLE AS SPARE PART)**



CODE: FTDP28755
MESH FILTER



CODE: KTRI02735
**CONDUCTIVE TOOL KIT
Ø38 mm
(FOR STEEL TANK MODEL)**



CODE: SPPV37133
BRISTLE BRUSH Ø38 mm



CODE: SPPV01336
CARPET BRUSH Ø38 mm

