



VACUUM CLEANERS - WET & DRY - PREMIUM

GP 1/27 W&D GS 1/33 W&D

POWER MAX

1300 W

WATER LIFT

2380
mmH₂O

AIRFLOW

200 m³/h

TANK CAPACITY

27 l
33 l

EXCLUSIVE FEATURES

- ▶ AP TUBE
- ▶ SANIFILTER
- ▶ INNOVATIVE GASKET
- ▶ STRONG HOOKS
- ▶ SCREWING CONNECTION
- ▶ SEALANT FLOATER & INTEGRATED ANTIFOAM SYSTEM
- ▶ RELIABLE CONSTRUCTION FOR INTENSIVE USE



MOST FREQUENTLY USE

HORECA



RETAIL



HEALTHCARE



EDUCATION



AGRICULTURE



CONSTRUCTION



HARDWARE CUSTOMER



LOGISTIC & TRANSPORT



AUTOMOTIVE



INNOVATIONS



BLACK
IS
GREEN™



HIGH SPEED
NEW GENERATION
MOTORS

SPECS



EXTREMELY FLEXIBLE HOOKS



CABLE HOOK



FLEXIBLE HOSE IS LOCKED
SECURELY AND RELIABLY

TECHNICAL DATA

		GP 1/27 W&D	GS 1/33 W&D
Code		ASD015015	ASD015036
PERFORMANCE			
Usage		WET&DRY	WET&DRY
Motor		1	1
Power	W	1100 -1300 max	1100 -1300 max
Voltage	V	220-240	220-240
Water lift	mmH ₂ O	2380	2380
Airflow	m³/h	200	200
Tank Capacity/Material	l	27/plastic	33/steel
Cable length	m	8,5	8,5
Sound Pressure Level [EN 60704-1; EN 60704-2-1; IEC 60335-2-69]	dB(A)	70	70
Diameter of accessories	mm	36	36
Dimensions (LxWxH)	mm	380x380x650	380x380x650
Weight	Kg	10,5	12,0

STANDARD EQUIPMENT

CODE: TBFX00704
**FLEXIBLE HOSE 2 m
Ø36 mm**



CODE: LAFN28238 (FOR 1PC)
**ALUMINIUM/PLASTIC
TUBE 50 cm Ø36 mm**
(MACHINE COMES WITH 2PCS)



CODE: LAFN85073
**HANDLE WITH AIR
REGULATOR Ø36 mm**



CODE: SPPV01771
**DOUBLE USE BRUSH
Ø36 mm**



CODE: SPPV28245
**WET FLOOR TOOL
Ø36 mm**



CODE: SPPV28242
FLAT LANCE Ø36 mm



CODE: SPPV28243
ROUND BRUSH Ø36 mm



CODE: MPVR00141
SMALL TOOL Ø36 mm

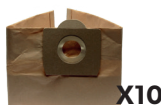


CODE: KTRI02133
FILTERING KIT



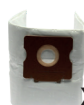
OPTIONAL ACCESSORIES

CODE: KTRI03035
PAPER BAG SET OF 10 PCS



X10

CODE: KTRI04795
**MICROFIBER BAG SET OF
10 PCS**



X10

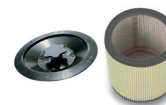
CODE: FTDP00222
PREFILTER PCB



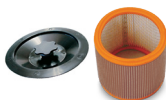
CODE: FTDP00659
**PAPER CARTRIDGE KIT W/
RING AND GASKET**



CODE: FTDP00654
**WASHABLE CARTRIDGE
KIT W/RING AND GASKET**



CODE: FTDP00657
**HEPA CARTRIDGE KIT W/
RING AND GASKET**



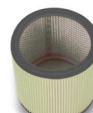
CODE: MPVR28723
FASTENING PLASTIC RING



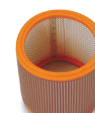
CODE: FTDP00528
**PAPER CARTRIDGE
(AVAILABLE AS SPARE PART)**



CODE: FTDP00583
**WASHABLE CARTRIDGE
(AVAILABLE AS SPARE PART)**



CODE: FTDP28844
**HEPA CARTRIDGE
(AVAILABLE AS SPARE PART)**



CODE: FTDP28755
MESH FILTER



CODE: MPVR11566
**CREVICE TOOL 35 cm
Ø36 mm**



CODE: MPVR11567
**FLEXIBLE CREVICE TOOL
60 cm Ø36 mm**



CODE: KTRI02734
**CONDUCTIVE TOOL KIT
Ø36 mm
(FOR STEEL TANK MODEL)**

