



VACUUM CLEANERS - WET & DRY - LIGHT INDUSTRIAL

# GC 2/90 W&D

POWER MAX

2400 W

WATER LIFT

2470 mmH<sub>2</sub>O

AIRFLOW

420 m<sup>3</sup>/h

TANK CAPACITY

90 l

## EXCLUSIVE FEATURES

- ▶ AP TUBE
- ▶ SANIFILTER
- ▶ INNOVATIVE GASKET
- ▶ STRONG HOOKS
- ▶ INDEPENDENT MOTORS WITH LIGHT SWITCHES
- ▶ SEALANT FLOATER & INTEGRATED ANTIFOAM SYSTEM
- ▶ DRAIN HOSE
- ▶ RELIABLE CONSTRUCTION FOR INTENSIVE USE
- ▶ DOUBLE STAGE MOTORS



## MOST FREQUENTLY USE

HEALTHCARE



PHARMA INDUSTRY



AGRICULTURE



CONSTRUCTION



HEAVY INDUSTRY



## INNOVATIONS



BLACK IS GREEN™

## SPECS



ULTRA-SHOCKPROOF PLASTIC TANK



DRAIN HOSE



LARGE WHEELS WITH TYRES

## TECHNICAL DATA

		<b>GC 2/90 W&amp;D</b>
Code		ASD015051
PERFORMANCE		
Usage		WET&DRY
Motor		2x 2-stage
Power	W	2000-2400 max
Voltage	V	220-240
Water lift	mmH <sub>2</sub> O	2470
Airflow	m <sup>3</sup> /h	420
Tank Capacity/Material	l	90/plastic (polyethylene)
Cable length	m	8,5
Sound Pressure Level (EN 60704-1; EN 60704-2-1; IEC 60335-2-69)	dB(A)	74
Diameter of accessories	mm	38
Dimensions (LxWxH)	mm	460x560x920
Weight	Kg	26,0

## STANDARD EQUIPMENT

CODE: TBFX00542  
**FLEXIBLE HOSE 2,5 m  
Ø38 mm**



CODE: LAFN43048 (FOR 1 PC)  
**ALUMINIUM/PLASTIC  
TUBE 50 cm Ø38 mm**  
(MACHINE COMES WITH 2PCS)



CODE: MPVR43047  
**HANDLE WITH AIR  
REGULATOR Ø38 mm**



CODE: SPPV43050  
**DUST TOOL Ø38 mm**



CODE: SPPV43051  
**WET TOOL Ø38 mm**



CODE: SPPV00156  
**FLAT LANCE Ø38 mm**



CODE: SPPV43052  
**ROUND BRUSH Ø38 mm**



CODE: MPVR43049  
**ADAPTER**



CODE: FTDP28733  
**FILTERING KIT**

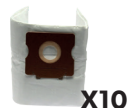


## OPTIONAL ACCESSORIES

CODE: KTRI02912  
**PAPER BAG SET OF 10 PCS**



CODE: KTRI04796  
**MICROFIBER BAG SET  
OF 10 PCS**



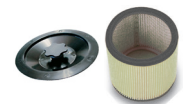
CODE: FTDP00223  
**PREFILTER PCB**



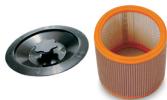
CODE: FTDP00659  
**PAPER CARTRIDGE KIT W/  
RING AND GASKET**



CODE: FTDP00654  
**WASHABLE CARTRIDGE  
KIT W/RING AND GASKET**



CODE: FTDP00657  
**HEPA CARTRIDGE KIT W/  
RING AND GASKET**



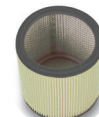
CODE: MPVR28723  
**FASTENING PLASTIC RING**



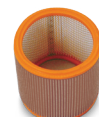
CODE: FTDP00528  
**PAPER CARTRIDGE  
(AVAILABLE AS SPARE PART)**



CODE: FTDP00583  
**WASHABLE CARTRIDGE  
(AVAILABLE AS SPARE PART)**



CODE: FTDP28844  
**HEPA CARTRIDGE  
(AVAILABLE AS SPARE PART)**



CODE: FTDP28755  
**MESH FILTER**



CODE: SPPV01336  
**CARPET BRUSH Ø38 mm**



CODE: SPPV28248  
**FIXED ACCESSORY FOR  
LIQUID**



CODE: SPPV28247  
**FIXED ACCESSORY FOR  
DUST**



CODE: SPPV30894  
**FIXED ACCESSORY FOR  
DUST AND LIQUIDS**

