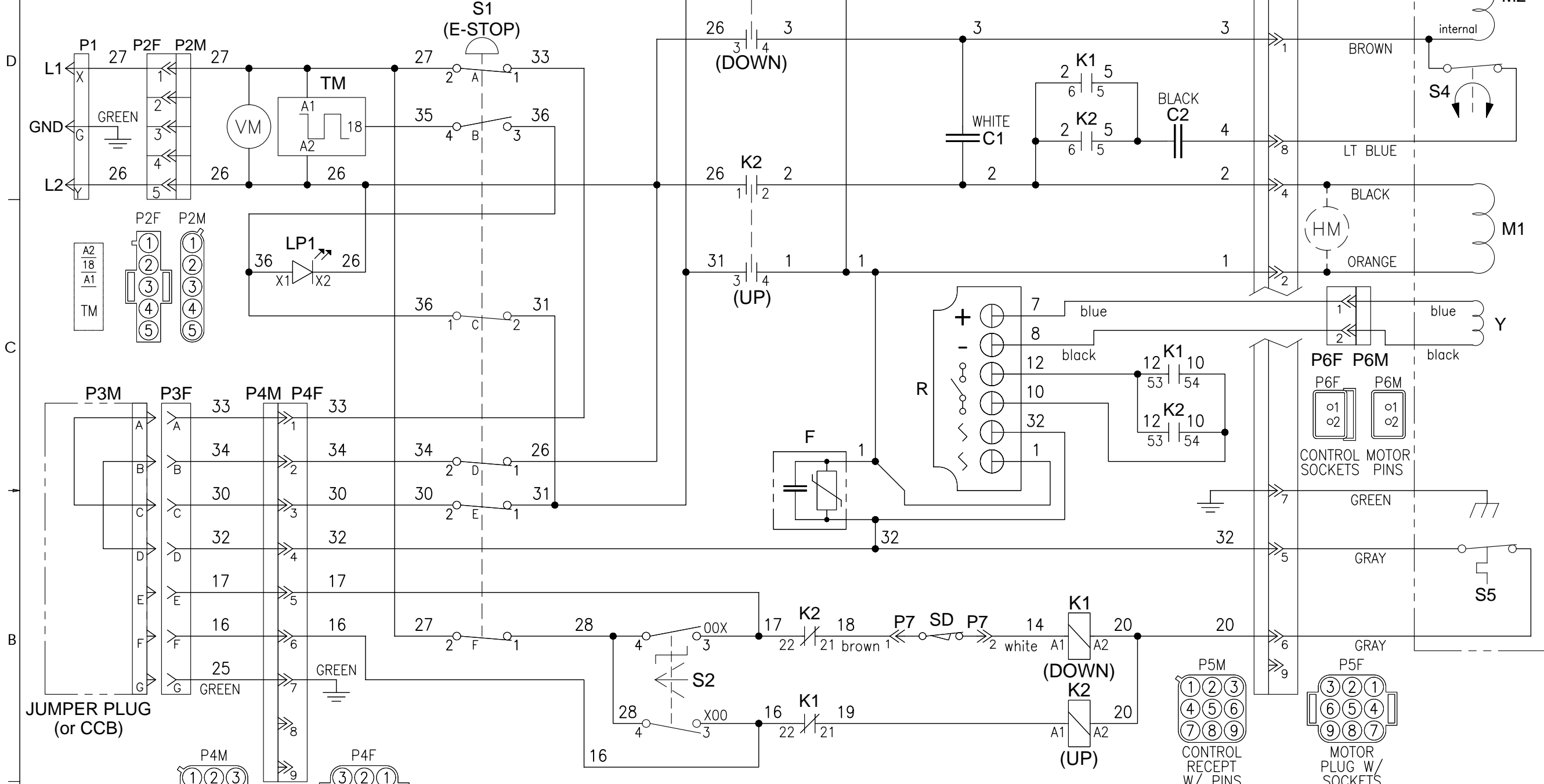


De Coster Motor WGP4L-4DBS 3611						
Hoist	Size	Volts	Freq	Amps	C1	C2
LNX-1000-208	1.9 Hp	208 V	60 Hz	9.5 A	50 μF	216-259 μF
LNX-1250-208	1.9 Hp	208 V	60 Hz	9.5 A	50 μF	216-259 μF
LNX-1500-208	1.9 Hp	208 V	60 Hz	9.5 A	50 μF	216-259 μF



- LEGEND:**
- C1 Capacitor, Run & Brake
 - C2 Capacitor, Start
 - F Main Filter
 - HM Hour Meter (Optional)
 - K1 Contactor, "Down"
 - K2 Contactor, "Up"
 - LP1 Power Indicator - S2
 - M1 Motor Winding (Main)
 - M2 Motor Winding (Aux.)
 - P1 Power Plug (L6-20)
 - P2 Power Plug
 - P3 Remote (Jumper) Plug (7 pin)
 - P4 Remote Plug
 - P5 Motor Plug
 - P6 Brake Plug
 - P7 Limit switch M12 connector
 - R Bridge Rectifier
 - S1 Switch, Emergency Stop
 - S2 Switch, Selector, "Up/Down"
 - S3 Switch, Centrifugal
 - S4 Switch, Thermal Protection
 - SD Overspeed OK limit switch
 - TM Timer Module, Repeat Cycle
 - VM Volt Meter
 - Y Brake Coil

Note:
All plugs shown from back (wire) side.

DEBUR AND BREAK SHARP EDGES			
CUSTOMER		WEIGHT	
TREATMENT		KG	
FINISH		UNLESS OTHERWISE STATED	
APPROVALS		DIMENSIONS ARE IN MM (INCH)	
DRAWN BY	DATE	TOL. ISD 2768-m	
RC	19 Aug 18	>	0.5 6 30 120 400
CHECKED BY		<	±0.1 ±0.2 ±0.3 ±0.5 ±0.8
APPROVED BY		MACHINED SURFACES	
RAW MATERIAL NO.		12.5	
CAD GENERATED DRAWING. DD NOT MANUALLY UPDATE.		FIRST ANGLE PROJECTION	
		SCALE	
		NA	

SKY CLIMBER
"Access Innovations Since 1955"

NOTICE
THE INFORMATION CONTAINED IN THIS DRAWING IS THE SOLE PROPERTY OF SKY CLIMBER. ANY REPRODUCTION IN PART OR WHOLE WITHOUT THE WRITTEN PERMISSION OF SKY CLIMBER IS PROHIBITED.

LNX Schematic, 208VAC
1 Phase, De Coster Motor

DWG. NO. **53005869** REV. **2**

SIZE B/A3 DO NOT SCALE DRAWING. SHEET 1 of 1

ECN#	REV.	DESCRIPTION	REV. BY	DATE
SC-10672	2	Change to .dwg. Add P5 symbol. No wiring change.	RC	24 Apr 2015